

Product name

Anti-Ooep antibody

Specificity

Mouse

Antibody description

Rabbit polyclonal antibody to Ooep

Preparation

This antigen of this antibody was peptide

Formulation

Liquid, 1*PBS (pH7.4), 0.2% BSA, 40% Glycerol.
Preservative: 0.05% Sodium Azide.

Storage

Store at +4°C after thawing. Aliquot store at -20°C or -80°C. Avoid repeated freeze / thaw cycles.

Clonality

Polyclonal

Ig Type

Rabbit IgG

Applications

IHC-P

Dilutions

IHC-P: 1:200

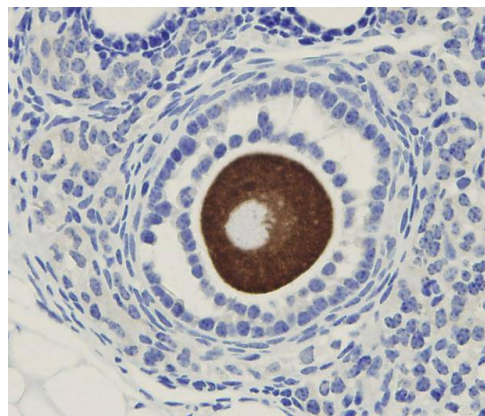
Validations

Fig1: Immunohistochemical analysis of paraffin-embedded mouse ovary tissue using anti-OOEP antibody. Counter stained with hematoxylin.