

Inhibin beta A antibody



Catalog Number: 111799

Product name

Inhibin beta A antibody

Specificity

Human; other species not tested.

Antibody description

Inhibin beta A Rabbit Polyclonal antibody. Positive WB detected in A549 cells, BGC-823 cells, HeLa cells, HepG2 cells, MCF7 cells, SGC-7901 cells. Positive IF detected in A549 cells, Hela cells. Positive IHC detected in human lung cancer tissue, human placenta tissue, human prostate cancer tissue. Observed molecular weight by Western-blot: 47 kDa

Preparation

This antibody was obtained by immunization of Inhibin beta A recombinant protein (Accession Number: XM_017012176). Purification method: Antigen affinity purified.

Formulation

PBS with 0.1% sodium azide and 50% glycerol pH 7.3.

Storage

Store at -20°C. DO NOT ALIQUOT

Clonality

Polyclonal

Ig Type

Rabbit IgG

Applications

ELISA, WB, IHC, IF

Dilutions

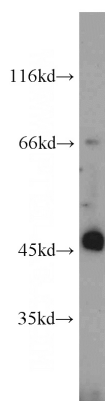
Recommended Dilution:

WB: 1:500-1:5000

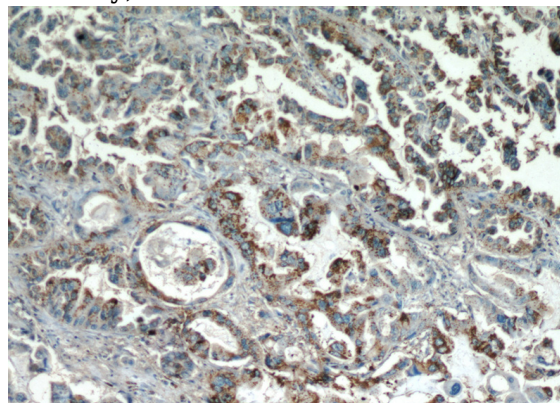
IHC: 1:20-1:200

IF: 1:20-1:200

Validations



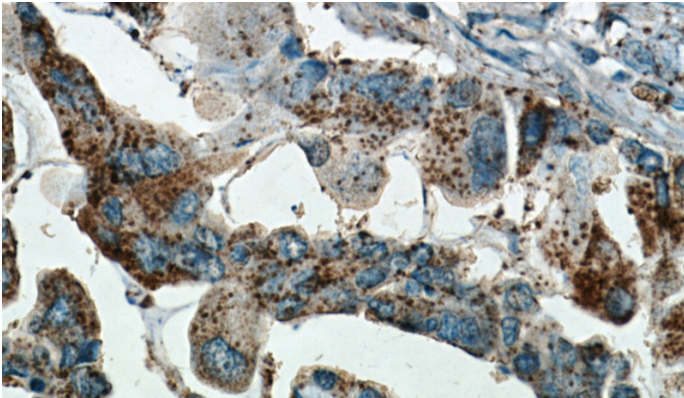
A549 cells were subjected to SDS PAGE followed by western blot with Catalog No:111799(INHBA antibody) at dilution of 1:1000



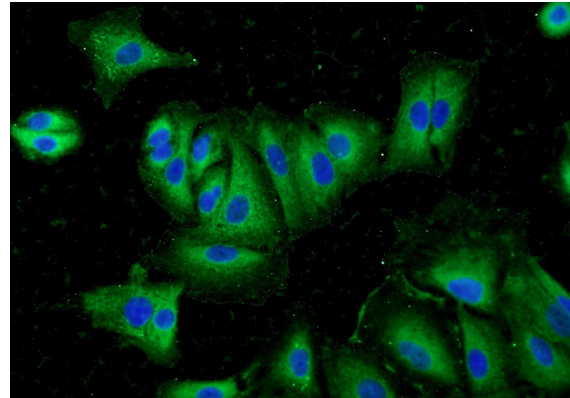
Immunohistochemical of paraffin-embedded human lung cancer using Catalog No:111799(INHBA antibody) at dilution of 1:50 (under 10x lens)

Inhibin beta A antibody

Catalog Number: 111799



Immunohistochemical of paraffin-embedded human lung cancer using Catalog No:111799(INHBA antibody) at dilution of 1:50 (under 40x lens)



Immunofluorescent analysis of A549 cells using Catalog No:111799(INHBA Antibody) at dilution of 1:50 and Alexa Fluor 488-conjugated AffiniPure Goat Anti-Rabbit IgG(H+L)