

# SMPD1,ASM antibody



Catalog Number: 115399

## Product name

SMPD1,ASM antibody

## Specificity

Human,Mouse,Rat; other species not tested.

## Antibody description

SMPD1,ASM Rabbit Polyclonal antibody. Positive WB detected in mouse cerebellum tissue, Transfected HEK-293 cells. Observed molecular weight by Western-blot: 60 kDa

## Preparation

This antibody was obtained by immunization of SMPD1,ASM recombinant protein (Accession Number: BC041164). Purification method: Antigen affinity purified.

## Formulation

PBS with 0.1% sodium azide and 50% glycerol pH 7.3.

## Storage

Store at -20°C. DO NOT ALIQUOT

## Clonality

Polyclonal

## Ig Type

Rabbit IgG

## Applications

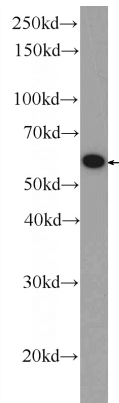
ELISA, WB

## Dilutions

Recommended Dilution:

WB: 1:200-1:1000

## Validations



mouse cerebellum tissue were subjected to SDS PAGE followed by western blot with Catalog No:115399(SMPD1,ASM Antibody) at dilution of 1:300