

# HELB antibody

Catalog Number: 111399

## Product name

HELB antibody

IP: 1:500-1:5000

IF: 1:10-1:100

## Specificity

Human; other species not tested.

## Antibody description

HELB Rabbit Polyclonal antibody. Positive IF detected in HeLa cells. Positive IP detected in HEK-293 cells. Positive WB detected in Jurkat cells, HEK-293 cells, HeLa cells. Observed molecular weight by Western-blot: 120-140 kDa

## Preparation

This antibody was obtained by immunization of HELB recombinant protein (Accession Number: NM\_033647). Purification method: Antigen affinity purified.

## Formulation

PBS with 0.1% sodium azide and 50% glycerol pH 7.3.

## Storage

Store at -20°C. DO NOT ALIQUOT

## Clonality

Polyclonal

## Ig Type

Rabbit IgG

## Applications

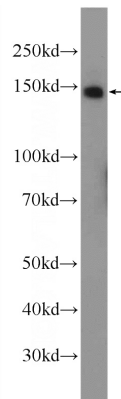
ELISA, WB, IF, IP

## Dilutions

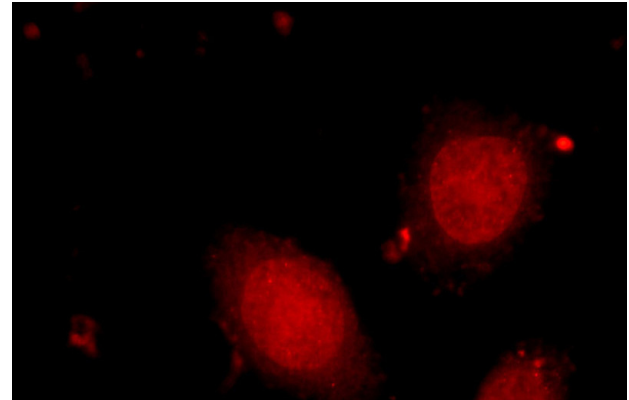
Recommended Dilution:

WB: 1:500-1:5000

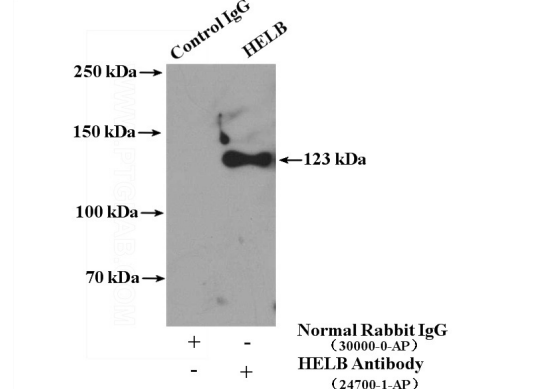
## Validations



Jurkat cells were subjected to SDS PAGE followed by western blot with Catalog No:111399(HELB Antibody) at dilution of 1:1000



Immunofluorescent analysis of HeLa cells using Catalog No:111399(HELB Antibody) at dilution of 1:25 and Rhodamine-Goat anti-Rabbit IgG



IP Result of anti-HELB (IP:Catalog No:111399, 4ug; Detection:Catalog No:111399 1:1000) with

# HELB antibody



Catalog Number: 111399

---

HEK-293 cells lysate 3000ug.