

# ERAL1 antibody

Catalog Number: 110399

## Product name

ERAL1 antibody

IP: 1:200-1:2000

IHC: 1:20-1:200

## Specificity

Human; other species not tested.

## Antibody description

ERAL1 Rabbit Polyclonal antibody. Positive WB detected in Jurkat cells, K-562 cells. Positive IP detected in Jurkat cells. Positive IHC detected in human colon cancer tissue. Observed molecular weight by Western-blot: 50-52 kDa

## Preparation

This antibody was obtained by immunization of ERAL1 recombinant protein (Accession Number: NM\_005702). Purification method: Antigen affinity purified.

## Formulation

PBS with 0.1% sodium azide and 50% glycerol pH 7.3.

## Storage

Store at -20°C. DO NOT ALIQUOT

## Clonality

Polyclonal

## Ig Type

Rabbit IgG

## Applications

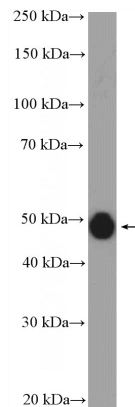
ELISA, IHC, WB, IP

## Dilutions

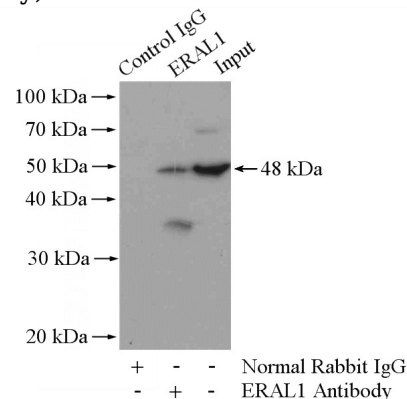
Recommended Dilution:

WB: 1:500-1:5000

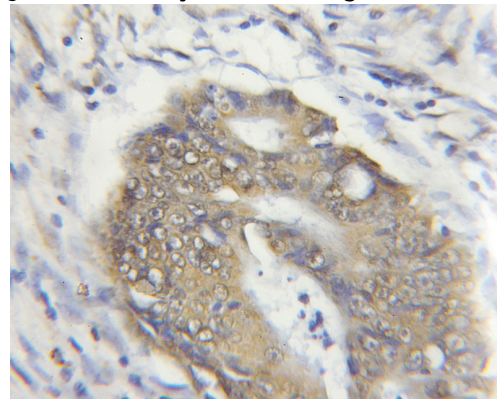
## Validations



Jurkat cells were subjected to SDS PAGE followed by western blot with Catalog No:110399(ERAL1 Antibody) at dilution of 1:1000



IP Result of anti-ERAL1 (IP:Catalog No:110399, 4ug; Detection:Catalog No:110399 1:500) with Jurkat cells lysate 4000ug.



Immunohistochemical of paraffin-embedded human colon cancer using Catalog

# ERAL1 antibody



Catalog Number: 110399

---

No:110399(ERAL1 antibody) at dilution of 1:50 (under 10x lens)