

SYK Polyclonal Antibody



Catalog Number: 163699

Product name

SYK Polyclonal Antibody

Specificity

Human, Mouse, Rat

Antibody description

Polyclonal antibody to SYK

Preparation

Antigen: Recombinant protein of human SYK

Formulation

PBS with 0.02% sodium azide, 50% glycerol, pH7.3.

Storage

Store at -20°C. Avoid freeze / thaw cycles.

Clonality

Polyclonal

Ig Type

Rabbit IgG

Applications

WB, IHC, IF

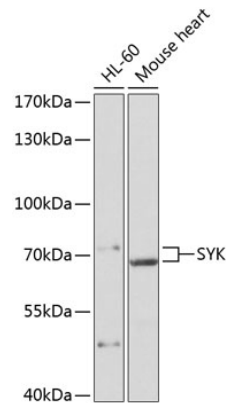
Dilutions

WB 1:500 - 1:2000

IHC 1:50 - 1:100

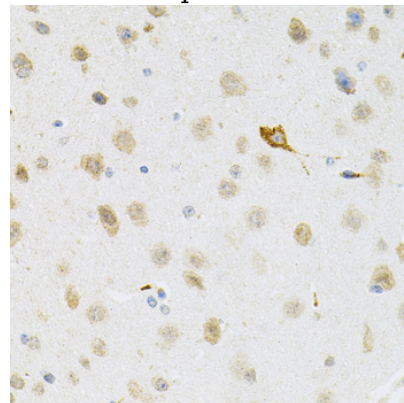
IF 1:50 - 1:200

Validations



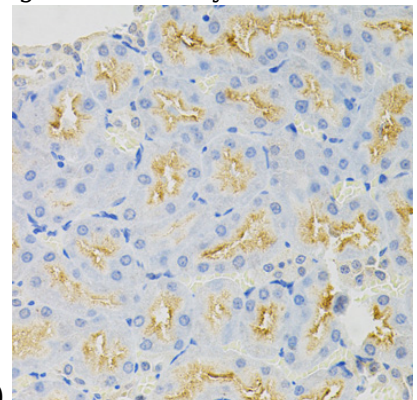
Western blot - SYK Polyclonal Antibody

Western blot analysis of extracts of various cell lines, using SYK antibody at 1:500 dilution. Secondary antibody: HRP Goat Anti-Rabbit IgG (H+L) at 1:10000 dilution. Lysates/proteins: 25ug per lane. Blocking buffer: 3% nonfat dry milk in TBST. Detection: ECL Basic Kit. Exposure time: 90s.



Immunohistochemistry - SYK Polyclonal Antibody

Immunohistochemistry of paraffin-embedded mouse brain using SYK Antibody at dilution of



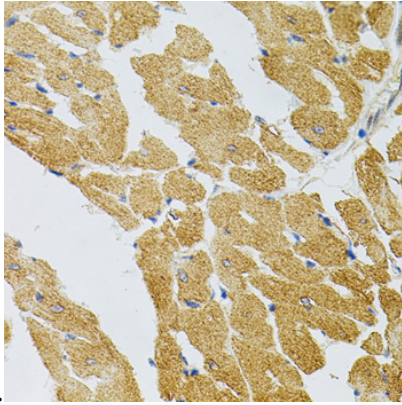
1:100 (40x lens).

SYK Polyclonal Antibody

Catalog Number: 163699

Immunohistochemistry - SYK Polyclonal Antibody

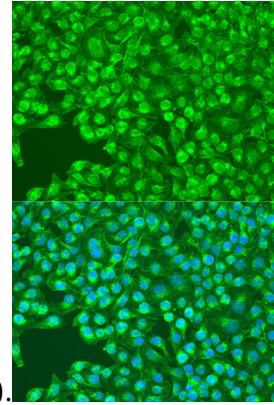
Immunohistochemistry of paraffin-embedded rat kidney using SYK Antibody at dilution of 1:100



(40x lens).

Immunohistochemistry - SYK Polyclonal Antibody

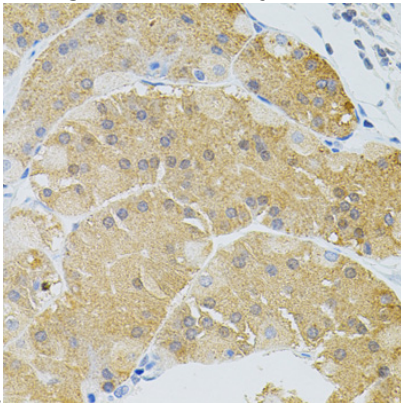
Immunohistochemistry of paraffin-embedded human stomach using SYK Antibody at dilution of



1:100 (40x lens).

Immunohistochemistry - SYK Polyclonal Antibody

Immunohistochemistry of paraffin-embedded rat heart using SYK Antibody at dilution of 1:100 (40x



lens).

Immunofluorescence - SYK Polyclonal Antibody

Immunofluorescence analysis of U2OS cells using SYK antibody at dilution of 1:100. Blue: DAPI for nuclear staining.