

# MMP19 antibody



Catalog Number: 112699

## Product name

MMP19 antibody

IP: 1:200-1:2000

IHC: 1:20-1:200

## Specificity

Human, Mouse, Rat; other species not tested.

IF: 1:20-1:200

## Antibody description

MMP19 Rabbit Polyclonal antibody. Positive IHC detected in human liver cancer tissue. Positive IF detected in SH-SY5Y cells. Positive IP detected in human placenta tissue. Positive WB detected in SH-SY5Y cells, human placenta tissue. Observed molecular weight by Western-blot: 57-60 kDa

## Preparation

This antibody was obtained by immunization of MMP19 recombinant protein (Accession Number: NM\_002429). Purification method: Antigen affinity purified.

## Formulation

PBS with 0.02% sodium azide and 50% glycerol pH 7.3.

## Storage

Store at -20°C. DO NOT ALIQUOT

## Clonality

Polyclonal

## Ig Type

Rabbit IgG

## Applications

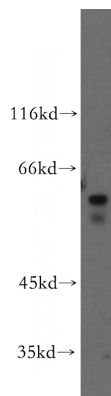
ELISA, WB, IHC, IP, IF

## Dilutions

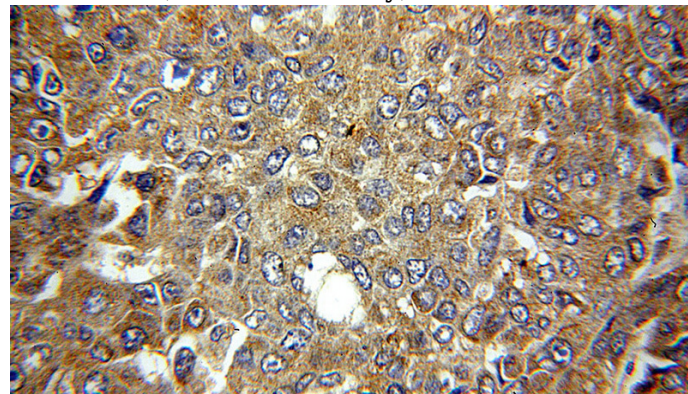
Recommended Dilution:

WB: 1:500-1:5000

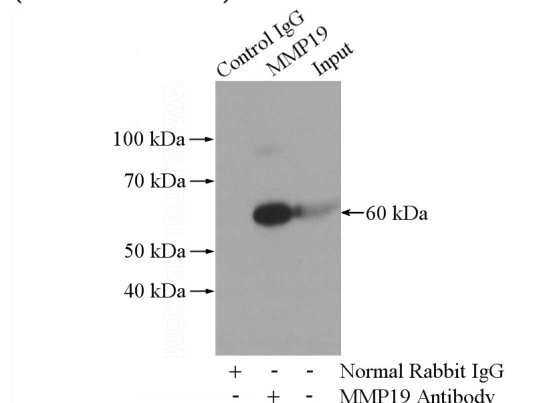
## Validations



SH-SY5Y cells were subjected to SDS PAGE followed by western blot with Catalog No:112699(MMP19 antibody) at dilution of 1:300



Immunohistochemical of paraffin-embedded human liver cancer using Catalog No:112699(MMP19 antibody) at dilution of 1:50 (under 40x lens)



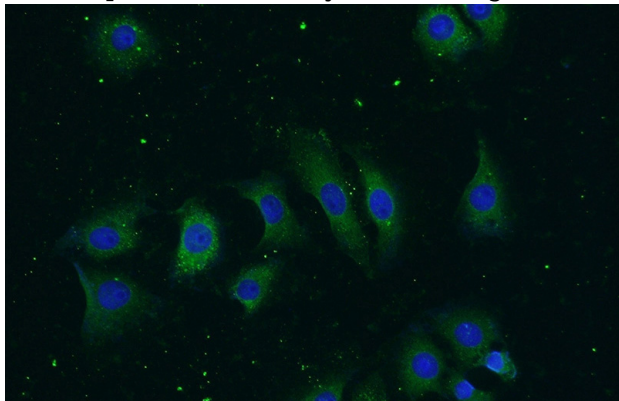
# MMP19 antibody



Catalog Number: 112699

---

IP Result of anti-MMP19 (IP:Catalog No:112699, 4ug; Detection:Catalog No:112699 1:500) with human placenta tissue lysate 1520ug.



Immunofluorescent analysis of (-20oc Ethanol) fixed SH-SY5Y cells using Catalog No:112699(MMP19 Antibody) at dilution of 1:50 and Alexa Fluor 488-conjugated AffiniPure Goat Anti-Rabbit IgG(H+L)