

Anti-Bak Rabbit antibody



Catalog Number: 167299

Product name

Anti-Bak Rabbit antibody

1:50

1:50

Specificity

Human

Antibody description

Bak Rabbit polyclonal antibody

Preparation

Antigen: A synthesized peptide derived from human Bak

Formulation

Rabbit IgG in phosphate buffered saline , pH 7.4, 150mM NaCl, 0.02% sodium azide and 50% glycerol.

Storage

Store at +4°C short term. Store at -20°C long term. Avoid freeze / thaw cycle.

Clonality

Polyclonal

Ig Type

Rabbit IgG

Applications

WB, IHC-P, ICC/IF, IP, FC

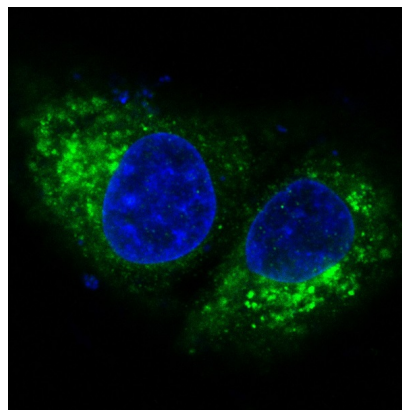
Dilutions

1:500~1:2000

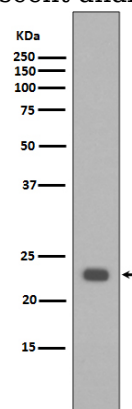
1:50~1:200

1:50~1:200

Validations

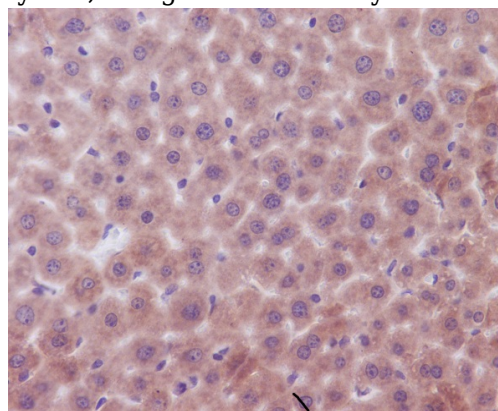


Immunofluorescent analysis of HeLa cells, using



Bak Antibody .

Western blot analysis of extracts of HeLa cell lysate, using BAK1 antibody.



Immunohistochemical analysis of paraffin-embedded mouse liver, using Bak Antibody.