

Anti-LILRB2 antibody



Catalog Number: 142299

Product name

Anti-LILRB2 antibody

Immunogen

[Human LILRB2 / ILT4 / LIR-2 \(His Tag\) recombinant protein](#)

Specificity

Human LILRB2 / ILT4 / LIR-2

Antibody description

Mouse Monoclonal to Human LILRB2

Preparation

This antibody was produced from a hybridoma resulting from the fusion of a mouse myeloma with B cells obtained from a mouse immunized with purified, recombinant Human LILRB2 / ILT4 / LIR-2 . The IgG fraction of the cell culture supernatant was purified by Protein A affinity chromatography.

Formulation

0.2 µm filtered solution in PBS

Storage

This antibody can be stored at 2°C-8°C for one month without detectable loss of activity. Antibody products are stable for twelve months from date of receipt when stored at -20°C to -80°C.

Preservative-Free.

Sodium azide is recommended to avoid

contamination (final concentration 0.05%-0.1%). It is toxic to cells and should be disposed of properly. Avoid repeated freeze-thaw cycles.

Clonality

Monoclonal

Ig Type

Mouse IgG2b

Applications

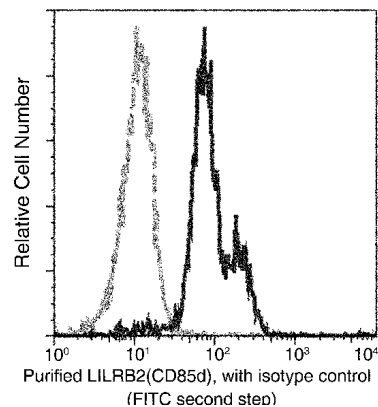
ELISA, FCM

Dilutions

This antibody can be used at 0.5-1 µg/ml with the appropriate secondary reagents to detect Human LILRB2 / ILT4 / LIR-2.

FCM: 0.5-2 µg/Test

Validations



LILRB2 / ILT4 / LIR-2 Antibody, Mouse MAb, Flow Cytometry