

EDC3 antibody



Catalog Number: 110299

Product name

EDC3 antibody

Recommended Dilution:

WB: 1:500-1:5000

Specificity

Human, Mouse, Rat; other species not tested.

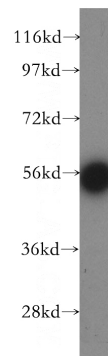
IP: 1:200-1:2000

IHC: 1:20-1:200

Antibody description

EDC3 Rabbit Polyclonal antibody. Positive IHC detected in human kidney tissue, human heart tissue, human liver tissue, human placenta tissue, human skin tissue, human spleen tissue. Positive WB detected in MCF7 cells, HeLa cells, human testis tissue. Positive IP detected in HeLa cells. Observed molecular weight by Western-blot: 56 kDa

Validations



Preparation

This antibody was obtained by immunization of EDC3 recombinant protein (Accession Number: NM_001142444). Purification method: Antigen affinity purified.

MCF7 cells were subjected to SDS PAGE followed by western blot with Catalog No:110299(EDC3 antibody) at dilution of 1:500

Formulation

PBS with 0.02% sodium azide and 50% glycerol pH 7.3.

Storage

Store at -20°C. DO NOT ALIQUOT

Clonality

Polyclonal

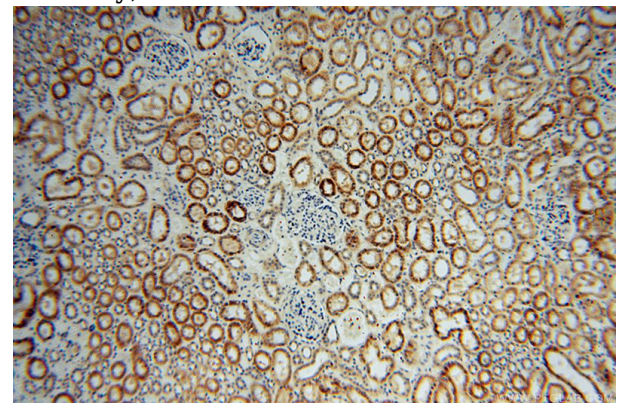
Ig Type

Rabbit IgG

Applications

ELISA, WB, IHC, IP

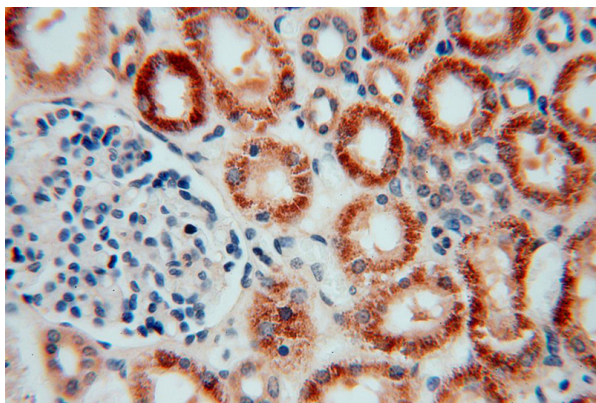
Dilutions



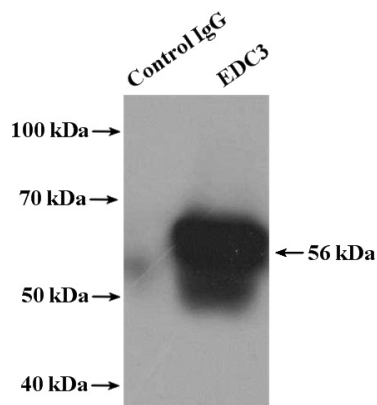
Immunohistochemical of paraffin-embedded human kidney using Catalog No:110299(EDC3 antibody) at dilution of 1:50 (under 10x lens)

EDC3 antibody

Catalog Number: 110299



Immunohistochemical of paraffin-embedded human kidney using Catalog No:110299(EDC3 antibody) at dilution of 1:50 (under 40x lens)



IP Result of anti-EDC3 (IP:Catalog No:110299, 4ug; Detection:Catalog No:110299 1:500) with HeLa cells lysate 3200ug.