

Anti-Phospho-PKM2 (Ser37) Rabbit antibody



Catalog Number: 166999

Product name

Anti-Phospho-PKM2 (Ser37) Rabbit antibody

Specificity

Human

Antibody description

Phospho-PKM2 (Ser37) Rabbit polyclonal antibody

Preparation

Antigen: Peptide sequence around phosphorylation site of serine 37(I-D-S(p)-P-P) derived from Human PKM2.

Formulation

Supplied at 1.0mg/mL in phosphate buffered saline (without Mg²⁺ and Ca²⁺), pH 7.4, 150mM NaCl, 0.02% sodium azide and 50% glycerol.

Storage

Store at 4°C short term. Store at -20°C long term. Avoid freeze / thaw cycle.

Clonality

Polyclonal

Ig Type

Rabbit IgG

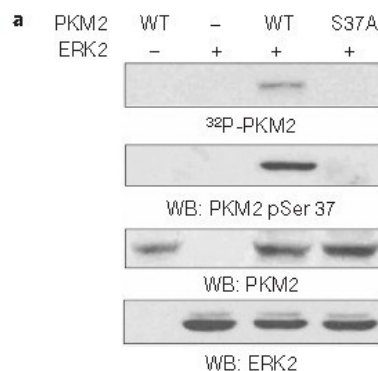
Applications

WB, ICC/IF

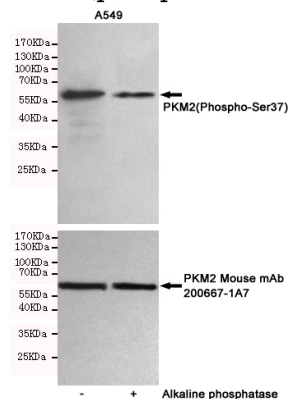
Dilutions

WB:1/500-1/1000 ICC:1/100-1/200

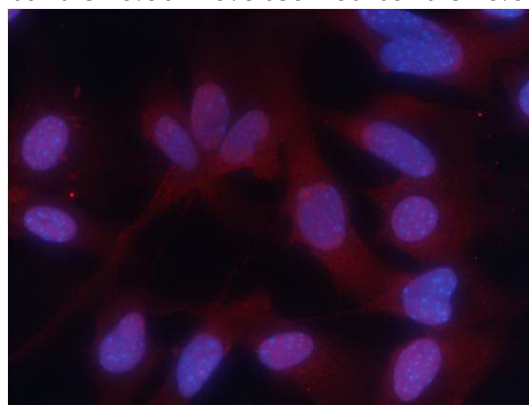
Validations



Western blot analysis of in vitro kinase assays carried out with purified active ERK2, wild-type (WT) PKM2 and PKM2 S37A mutant using PKM2(phospho-Ser37)Antibody .



Western blot detection of PKM2(Phospho-Ser37) in A549 cells untreated or treated with Alkaline phosphatase using PKM2(Phospho-Ser37) Rabbit pAb (dilution 1:500, upper) or PKM2 Mouse mAb (200667-1A7,dilution 1:1000, lower)).Predicted band size:60kDa.Observed band size:60kDa.



Immunofluorescence staining of methanol-fixed MEF cells using PKM2 (phospho-Ser37) Antibody .