

# Anti-CD180/RP105 antibody



Catalog Number: 105599

## Product name

Anti-CD180/RP105 antibody

## Immunogen

[Mouse CD180/RP105 \(His Tag\) recombinant protein](#)

## Specificity

Mouse CD180 / RP105

## Antibody description

Rabbit polyclonal to CD180/RP105

## Preparation

Produced in rabbits immunized with purified, recombinant Mouse CD180 / RP105 (rh CD180 / RP105; NP\_032559.2; Met1-Ser626). CD180 / RP105 specific IgG was purified by Mouse CD180 / RP105 affinity chromatography.

## Formulation

0.2 µm filtered solution in PBS

## Storage

This antibody can be stored at 2°C-8°C for one month without detectable loss of activity. Antibody products are stable for twelve months from date of receipt when stored at -20°C to -80°C.

Preservative-Free.

Sodium azide is recommended to avoid contamination (final concentration 0.05%-0.1%). It is toxic to cells and should be disposed of properly. Avoid repeated freeze-thaw cycles.

## Clonality

Polyclonal

## Ig Type

Rabbit IgG

## Applications

ELISA, WB, IHC-P

## Dilutions

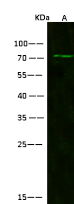
WB: 10-50 µg/ml

ELISA: 0.1-0.2 µg/mL

This antibody can be used at 0.1-0.2 µg/mL with the appropriate secondary reagents to detect Mouse CD180 / RP105. The detection limit for Mouse CD180 / RP105 is < 0.039 ng/well.

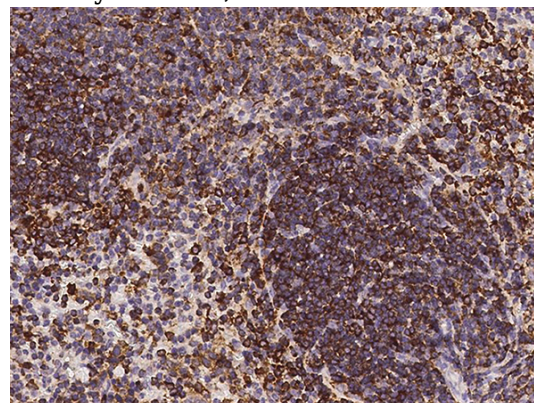
IHC-P: 0.5-2 µg/mL

## Validations



Items	Lanes	A
Sample (whole cell lysate)		HL-60
Sample Volume (µg/lane)		30
Gel		13% SDS-PAGE reducing gel
Recommended Concentration		10-50 µg/ml
Secondary Antibody		Dylight 800-labeled Antibody To Rabbit IgG (H+L) at 1:5000 dilution
Developed using Odyssey imaging system.		
Explanation		Predicted band size : 84 kDa Observed band size : 70 kDa

CD180 / RP105 Antibody, Rabbit PAb, Antigen Affinity Purified, Western blot



CD180 / RP105 Antibody, Rabbit PAb, Antigen Affinity Purified, Immunohistochemistry

Immunochemical staining of mouse CD180 in mouse spleen with rabbit polyclonal antibody (0.5

# Anti-CD180/RP105 antibody



Catalog Number: 105599

---

µg/mL, formalin-fixed paraffin embedded sections).