

# RBM15 antibody

Catalog Number: 114599

## Product name

RBM15 antibody

IHC: 1:20-1:200

IF: 1:20-1:200

## Specificity

Human, Mouse, Rat; other species not tested.

## Antibody description

RBM15 Rabbit Polyclonal antibody. Positive IF detected in HepG2 cells. Positive IHC detected in human breast cancer tissue. Positive WB detected in HEK-293 cells, A431 cells, K-562 cells, MCF7 cells. Observed molecular weight by Western-blot: 100-107 kDa

## Preparation

This antibody was obtained by immunization of RBM15 recombinant protein (Accession Number: BC006397). Purification method: Antigen affinity purified.

## Formulation

PBS with 0.1% sodium azide and 50% glycerol pH 7.3.

## Storage

Store at -20°C. DO NOT ALIQUOT

## Clonality

Polyclonal

## Ig Type

Rabbit IgG

## Applications

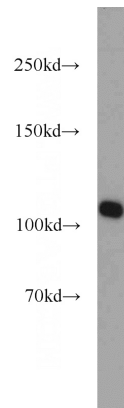
ELISA, WB, IHC, IF

## Dilutions

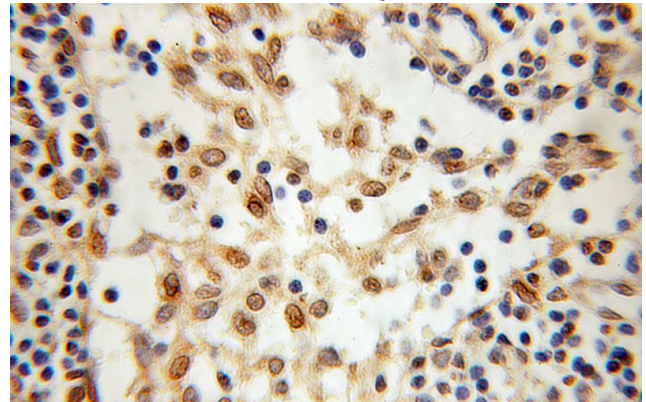
Recommended Dilution:

WB: 1:500-1:5000

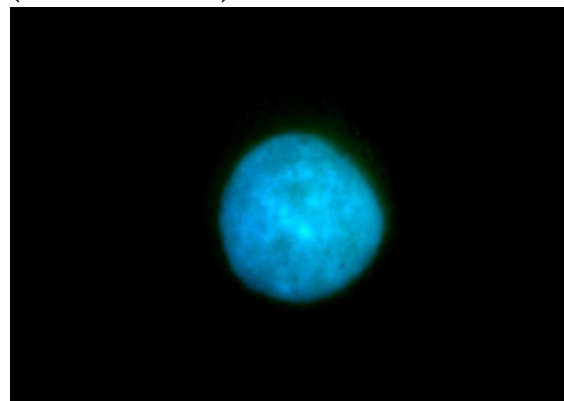
## Validations



HEK-293 cells were subjected to SDS PAGE followed by western blot with Catalog No:114599(RBM15 antibody) at dilution of 1:1000



Immunohistochemical of paraffin-embedded human breast cancer using Catalog No:114599(RBM15 antibody) at dilution of 1:100 (under 10x lens)



Immunofluorescent analysis of HepG2 cells, using

# RBM15 antibody



Catalog Number: 114599

---

RBM15 antibody Catalog No:114599 at 1:100 dilution and FITC-labeled donkey anti-rabbit

IgG(green). Blue pseudocolor = DAPI (fluorescent DNA dye).