

Anti-PKC alpha Rabbit antibody



Catalog Number: 167199

Product name

Anti-PKC alpha Rabbit antibody

Specificity

Human, Mouse, Rat

Antibody description

PKC alpha Rabbit polyclonal antibody

Preparation

Antigen: A synthesized peptide derived from human PKC alpha

Formulation

Rabbit IgG in phosphate buffered saline , pH 7.4, 150mM NaCl, 0.02% sodium azide and 50% glycerol.

Storage

Store at 4°C short term. Store at -20°C long term. Avoid freeze / thaw cycle.

Clonality

Polyclonal

Ig Type

Rabbit IgG

Applications

WB, IHC-P, ICC/IF, IP, FC

Dilutions

WB: 1/1000-1/2000

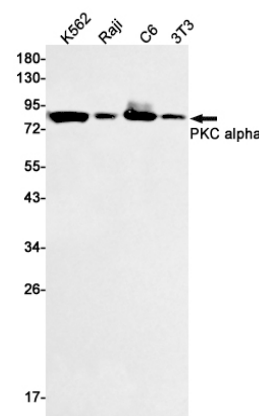
IHC: 1/50-1/200

ICC/IF: 1/50-1/200

IP: 1/50

FC: 1/50

Validations



Western blot detection of PKC alpha in K562, Raji, C6, 3T3 cell lysates using PKC alpha Rabbit pAb(1:1000 diluted). Predicted band size: 75kDa. Observed band size: 75kDa.