

LEPREL2 antibody



Catalog Number: 112199

Product name

LEPREL2 antibody

Immunogen

[Human LEPREL2 Recombinant protein \(His tag\)](#)

Specificity

Human, Mouse, Rat; other species not tested.

Antibody description

LEPREL2 Rabbit Polyclonal antibody. Positive WB detected in MDA-MB-453s cells, human liver tissue. Positive IP detected in MDA-MB-453s cells. Observed molecular weight by Western-blot: 82 kDa

Preparation

This antibody was obtained by immunization of LEPREL2 recombinant protein (Accession Number: BC017217). Purification method: Antigen affinity purified.

Formulation

PBS with 0.02% sodium azide and 50% glycerol pH 7.3.

Storage

Store at -20°C. DO NOT ALIQUOT

Clonality

Polyclonal

Ig Type

Rabbit IgG

Applications

ELISA, WB, IP

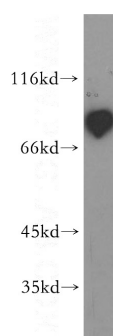
Dilutions

Recommended Dilution:

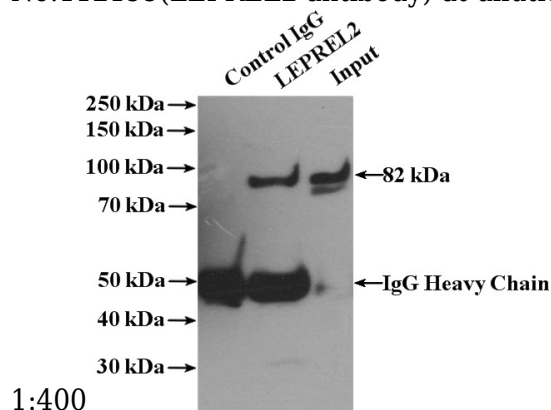
WB: 1:200-1:2000

IP: 1:200-1:2000

Validations



MDA-MB-453s cells were subjected to SDS PAGE followed by western blot with Catalog No:112199(LEPREL2 antibody) at dilution of



IP Result of anti-LEPREL2 (IP:Catalog No:112199, 4ug; Detection:Catalog No:112199 1:500) with MDA-MB-453s cells lysate 2800ug.