

# PI3 Kinase p110 beta Polyclonal Antibody



Catalog Number: 160199

## Product name

PI3 Kinase p110 beta Polyclonal Antibody

## Specificity

Human, Mouse, Rat

## Antibody description

Polyclonal antibody to PI3 Kinase p110 beta

## Preparation

Antigen: Recombinant fusion protein containing a sequence corresponding to amino acids 771-1070 of human PI3 Kinase p110 beta (NP\_006210.1).

## Formulation

PBS with 0.02% sodium azide, 50% glycerol, pH7.3.

## Storage

Store at -20°C. Avoid freeze / thaw cycles.

## Clonality

Polyclonal

## Ig Type

Rabbit IgG

## Applications

WB, IHC, IF

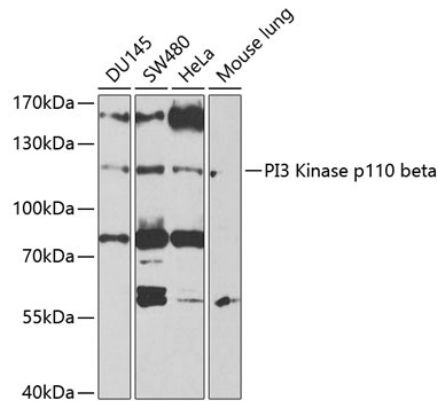
## Dilutions

WB 1:500 - 1:2000

IHC 1:50 - 1:100

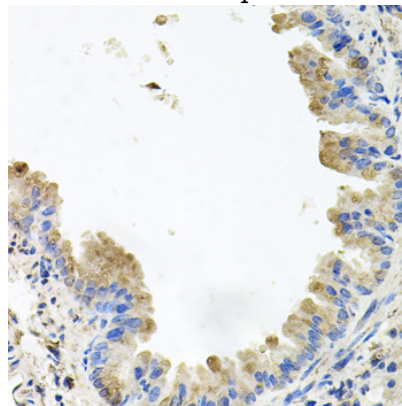
IF 1:50 - 1:100

## Validations



Western blot - PI3 Kinase p110 beta Polyclonal Antibody

Western blot analysis of extracts of various cell lines, using PI3 Kinase p110 beta antibody at 1:1000 dilution. Secondary antibody: HRP Goat Anti-Rabbit IgG (H+L) at 1:10000 dilution. Lysates/proteins: 25ug per lane. Blocking buffer: 3% nonfat dry milk in TBST. Detection: ECL Enhanced Kit. Exposure time: 90s.



Immunohistochemistry - PI3 Kinase p110 beta Polyclonal Antibody

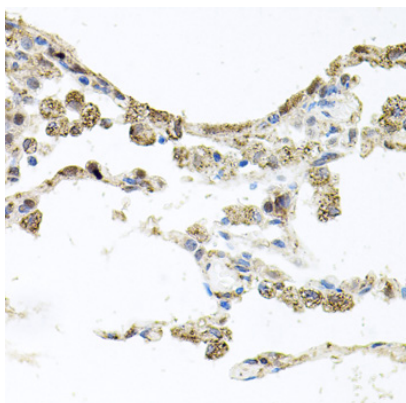
Immunohistochemistry of paraffin-embedded mouse lung using PI3 Kinase p110 beta antibody at dilution of 1:100 (40x lens).

# PI3 Kinase p110 beta Polyclonal Antibody



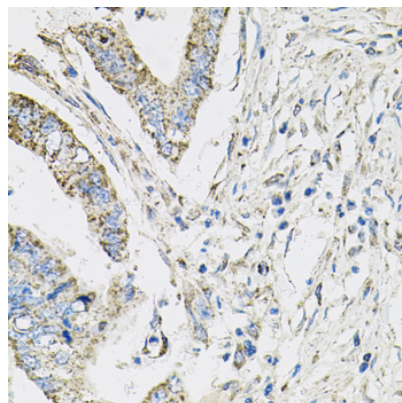
Catalog Number: 160199

---



Immunohistochemistry - PI3 Kinase p110 beta Polyclonal Antibody

Immunohistochemistry of paraffin-embedded human lung using PI3 Kinase p110 beta antibody at dilution of 1:100 (40x lens).



Immunohistochemistry - PI3 Kinase p110 beta Polyclonal Antibody

Immunohistochemistry of paraffin-embedded human colon carcinoma using PI3 Kinase p110 beta antibody at dilution of 1:100 (40x lens).