

# CBLB antibody

Catalog Number: 108899

## Product name

CBLB antibody

## Immunogen

[Human CBLB Recombinant protein \(GST tag\)](#)

## Specificity

Human, Mouse, Rat; other species not tested.

## Antibody description

CBLB Rabbit Polyclonal antibody. Positive IF detected in HepG2 cells. Positive IHC detected in human lung cancer tissue, human kidney tissue, human lung tissue, human placenta tissue, human spleen tissue, human testis tissue, mouse colon tissue. Positive IP detected in HEK-293 cells. Positive WB detected in HEK-293 cells, A549 cells. Observed molecular weight by Western-blot: 109 kDa

## Preparation

This antibody was obtained by immunization of CBLB recombinant protein (Accession Number: XM\_047449112). Purification method: Antigen affinity purified.

## Formulation

PBS with 0.1% sodium azide and 50% glycerol pH 7.3.

## Storage

Store at -20°C. DO NOT ALIQUOT

## Clonality

Polyclonal

## Ig Type

Rabbit IgG

## Applications

ELISA, WB, IHC, IF, IP

## Dilutions

Recommended Dilution:

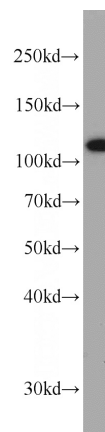
WB: 1:500-1:5000

IP: 1:200-1:1000

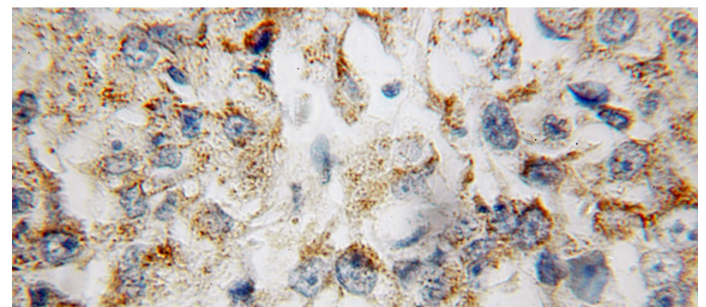
IHC: 1:20-1:200

IF: 1:20-1:200

## Validations



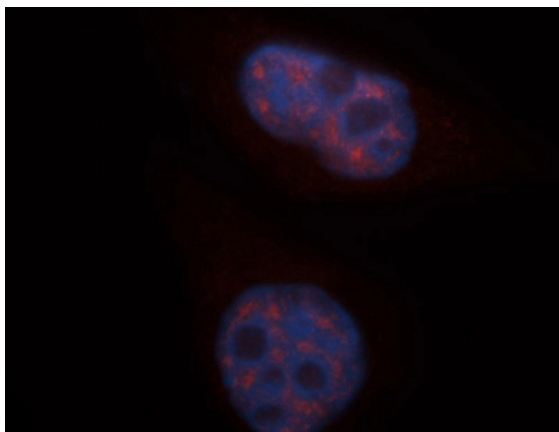
HEK-293 cells were subjected to SDS PAGE followed by western blot with Catalog No:108899(CBLB antibody) at dilution of 1:500



Immunohistochemical of paraffin-embedded human lung cancer using Catalog No:108899(CBLB antibody) at dilution of 1:100 (under 10x lens)

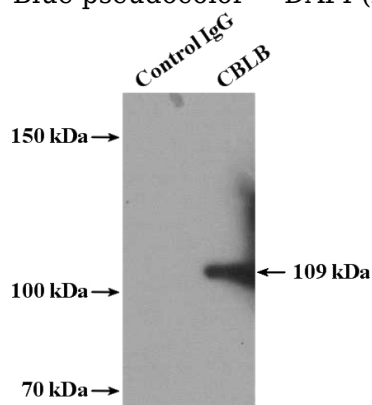
# CBLB antibody

Catalog Number: 108899



Immunofluorescent analysis of HepG2 cells, using CBLB antibody Catalog No:108899 at 1:50 dilution and Rhodamine-labeled goat anti-rabbit IgG (red).

Blue pseudocolor = DAPI (fluorescent DNA dye).



IP Result of anti-CBLB (IP:Catalog No:108899, 4ug; Detection:Catalog No:108899 1:300) with HEK-293 cells lysate 3680ug.