

Anti-Calbindin Rabbit antibody



Catalog Number: 166899

Product name

Anti-Calbindin Rabbit antibody

Specificity

Human, Mouse, Rat

Antibody description

Calbindin Rabbit polyclonal antibody

Preparation

Antigen: A synthetic peptide of human Calbindin

Formulation

Supplied in 50nM Tris-Glycine(pH 7.4), 0.15M NaCl, 40%Glycerol, 0.01% sodium azide and 0.05% BSA.

Storage

Store at -20°C. Stable for 12 months from date of receipt.

Clonality

Polyclonal

Ig Type

Rabbit IgG

Applications

WB, IHC-P, ICC/IF

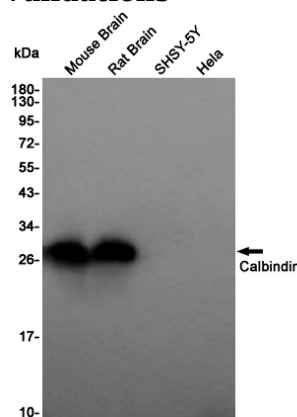
Dilutions

WB: 1/1000-1/5000

IHC: 1/20-1/100

ICC/IF: 1/20

Validations



Western blot detection of Calbindin in Mouse Brain,Rat Brain,SHSY-5Y,Hela cell lysates using Calbindin Rabbit pAb(1:1000 diluted).Predicted band size:30KDa.Observed band size:30KDa.