

Anti-CDC42EP5 antibody



Catalog Number: 175899

Product name

Polyclonal

Anti-CDC42EP5 antibody

Ig Type

Specificity

Rabbit IgG

Human, Mouse

Applications

Antibody description

WB, IHC-P

Rabbit polyclonal antibody to CDC42EP5

Dilutions

Preparation

WB: 1:500-1:2000

This antigen of this antibody was the antiserum was produced against synthesized peptide derived from human borg3. aa range:1-50

IHC-P: 1:100-1:300

Formulation

Liquid, Liquid in PBS containing 50% glycerol, 0.5% BSA and 0.02% sodium azide.

Storage

Store at +4°C after thawing. Aliquot store at -20°C or -80°C. Avoid repeated freeze / thaw cycles.

Clonality

Validations

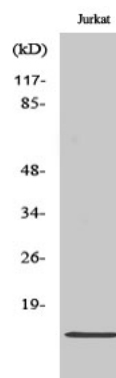


Fig1:: Western Blot analysis of various cells using Cdc42EP5 Polyclonal Antibody diluted at 1: 500