

OTX2 Polyclonal Antibody



Catalog Number: 161899

Product name

OTX2 Polyclonal Antibody

Specificity

Human, Mouse, Rat

Antibody description

Polyclonal antibody to OTX2

Preparation

Antigen: Recombinant fusion protein containing a sequence corresponding to amino acids 140-280 of human OTX2 (NP_068374.1).

Formulation

PBS with 0.02% sodium azide, 50% glycerol, pH7.3.

Storage

Store at -20°C. Avoid freeze / thaw cycles.

Clonality

Polyclonal

Ig Type

Rabbit IgG

Applications

WB, IHC, IF

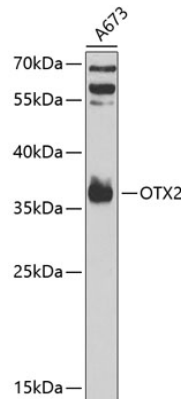
Dilutions

WB 1:500 - 1:2000

IHC 1:50 - 1:100

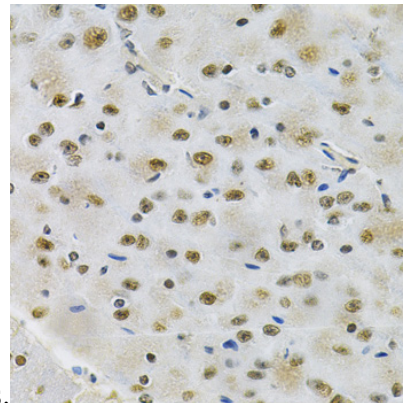
IF 1:50 - 1:100

Validations



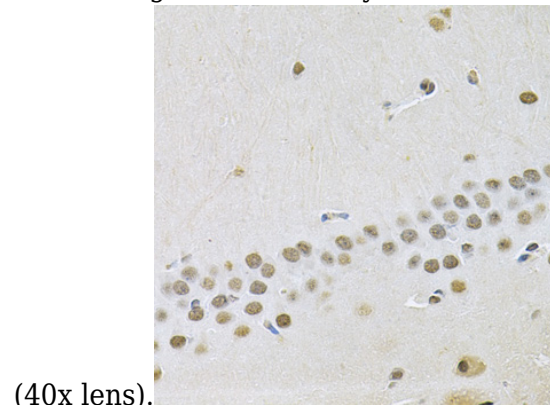
Western blot - OTX2 Polyclonal Antibody

Western blot analysis of extracts of A-673 cells, using OTX2 antibody at 1:1000 dilution. Secondary antibody: HRP Goat Anti-Rabbit IgG (H+L) at 1:10000 dilution. Lysates/proteins: 25ug per lane. Blocking buffer: 3% nonfat dry milk in TBST. Detection: ECL Basic Kit. Exposure time:



Immunohistochemistry - OTX2 Polyclonal Antibody

Immunohistochemistry of paraffin-embedded rat brain using OTX2 Antibody at dilution of 1:100



Immunohistochemistry - OTX2 Polyclonal Antibody

OTX2 Polyclonal Antibody



Catalog Number: 161899

Immunohistochemistry of paraffin-embedded

mouse brain using OTX2 Antibody at dilution of 1:100 (40x lens).