

Anti-HTR2B antibody



Catalog Number: 141899

Product name

Anti-HTR2B antibody

Specificity

Human HTR2B

Antibody description

Rabbit Polyclonal to Human HTR2B

Preparation

Produced in rabbits immunized with a synthetic peptide corresponding to the center region of the Human HTR2B, and purified by antigen affinity chromatography.

Formulation

0.2 µm filtered solution in PBS

Storage

This antibody can be stored at 2°C-8°C for one month without detectable loss of activity. Antibody products are stable for twelve months from date of receipt when stored at -20°C to -80°C.

Preservative-Free.

Sodium azide is recommended to avoid contamination (final concentration 0.05%-0.1%). It is toxic to cells and should be disposed of

properly. Avoid repeated freeze-thaw cycles.

Clonality

Polyclonal

Ig Type

Rabbit IgG

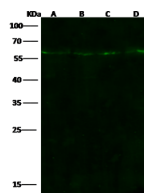
Applications

WB

Dilutions

WB: 5-20 µg/ml

Validations



Items \ Lanes	A	B	C	D
Sample	HT-29 (whole cell lysate)	Hela (whole cell lysate)	Mouse spleen tissue lysate	293 (whole cell lysate)
Sample Volume (µg/lane)	30	30	30	30
Gel	13% SDS-PAGE reducing gel			
Recommended Concentration	10 µg/ml			
Secondary Antibody	DyLight 800-labeled Antibody to Rabbit IgG (H+L), at 1:5000 dilution. Developed using Odyssey imaging system.			
Explanation	Predicted band size : 54 kDa Observed band size : 57 kDa			

HTR2B Antibody, Rabbit PAb, Antigen Affinity Purified, Western blot