

# Anti-CD68 antibody



Catalog Number: 100899

## Product name

Anti-CD68 antibody

## Immunogen

[Human CD68 \(aa 1-319, His Tag\) recombinant protein](#)

## Specificity

Human CD68

## Antibody description

Rabbit polyclonal to CD68

## Preparation

Produced in rabbits immunized with purified, recombinant Human CD68 (rh CD68; P34810-1; Met1-Ser319). CD68 specific IgG was purified by Human CD68 affinity chromatography.

## Formulation

0.2 µm filtered solution in PBS with 5% trehalose

## Storage

This antibody can be stored at 2°C-8°C for one month without detectable loss of activity. Antibody products are stable for twelve months from date of receipt when stored at -20°C to -80°C.

Preservative-Free.

Sodium azide is recommended to avoid contamination (final concentration 0.05%-0.1%). It is toxic to cells and should be disposed of properly. Avoid repeated freeze-thaw cycles.

## Clonality

Polyclonal

## Ig Type

Rabbit IgG

## Applications

ELISA, IHC-P

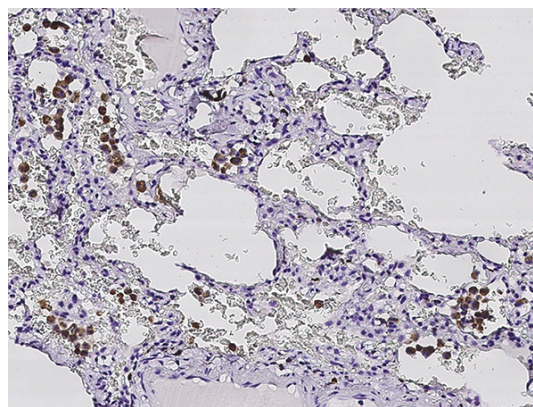
## Dilutions

ELISA: 0.1-0.2 µg/mL

This antibody can be used at 0.1-0.2 µg/mL with the appropriate secondary reagents to detect Human CD68. The detection limit for Human CD68 is approximately 0.00245 ng/well.

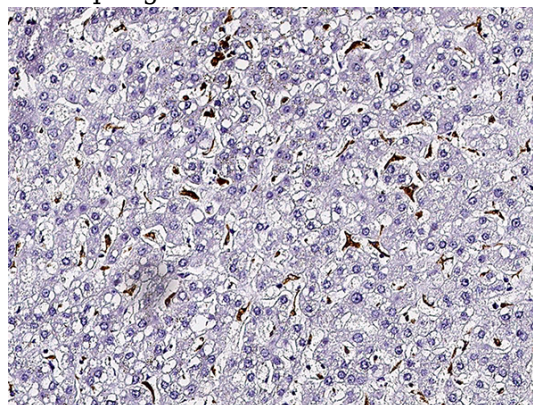
IHC-P: 0.05-2 µg/mL

## Validations



CD68 Antibody, Rabbit PAb, Antigen Affinity Purified, Immunohistochemistry

Immunochemical staining of human CD68 in human lung with rabbit polyclonal antibody (0.1 µg/mL, formalin-fixed paraffin embedded sections). Positive staining was localized to macrophages.



CD68 Antibody, Rabbit PAb, Antigen Affinity Purified, Immunohistochemistry

# Anti-CD68 antibody



Catalog Number: 100899

---

Immunochemical staining of human CD68 in human liver (cirrhosis) with rabbit polyclonal

antibody (0.1 µg/mL, formalin-fixed paraffin embedded sections).