

Twinkle antibody



Catalog Number: 116499

Product name

Twinkle antibody

Specificity

Human, Mouse, Rat; other species not tested.

Antibody description

Twinkle Rabbit Polyclonal antibody. Positive WB detected in HeLa cells, Jurkat cells. Positive IHC detected in human skeletal muscle tissue. Observed molecular weight by Western-blot: 60kd

Preparation

This antibody was obtained by immunization of Twinkle recombinant protein (Accession Number: BC033762). Purification method: Antigen affinity purified.

Formulation

PBS with 0.02% sodium azide and 50% glycerol pH 7.3.

Storage

Store at -20°C. DO NOT ALIQUOT

Clonality

Polyclonal

Ig Type

Rabbit IgG

Applications

ELISA, WB, IHC

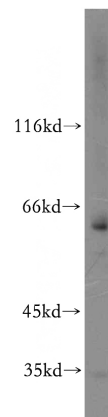
Dilutions

Recommended Dilution:

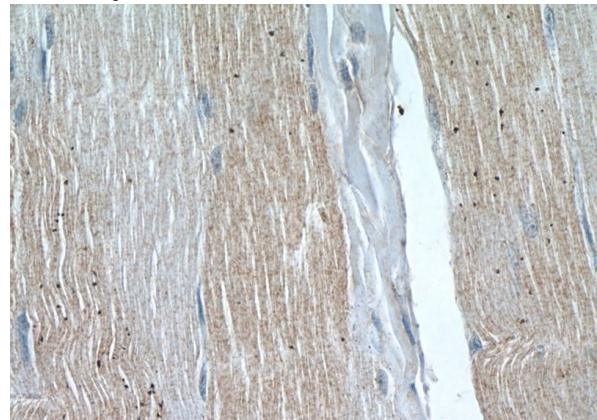
WB: 1:500-1:5000

IHC: 1:20-1:200

Validations



HeLa cells were subjected to SDS PAGE followed by western blot with Catalog No:116499(PEO1 antibody) at dilution of 1:300



Immunohistochemistry of paraffin-embedded human skeletal muscle tissue slide using Catalog No:116499(PEO1 Antibody) at dilution of 1:50 (under 40x lens)