

# PAK2 antibody

Catalog Number: 113499

## Product name

PAK2 antibody

IHC: 1:20-1:200

IF: 1:10-1:100

## Specificity

Human; other species not tested.

## Antibody description

PAK2 Rabbit Polyclonal antibody. Positive IF detected in Hela cells. Positive IHC detected in human ovary tissue, human spleen tissue. Positive WB detected in human skeletal muscle tissue. Observed molecular weight by Western-blot: 54 kDa

## Preparation

This antibody was obtained by immunization of Peptide (Accession Number: NM\_002577). Purification method: Antigen affinity purified.

## Formulation

PBS with 0.02% sodium azide and 50% glycerol pH 7.3.

## Storage

Store at -20°C. DO NOT ALIQUOT

## Clonality

Polyclonal

## Ig Type

Rabbit IgG

## Applications

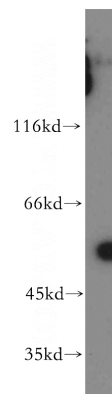
ELISA, IHC, IF, WB

## Dilutions

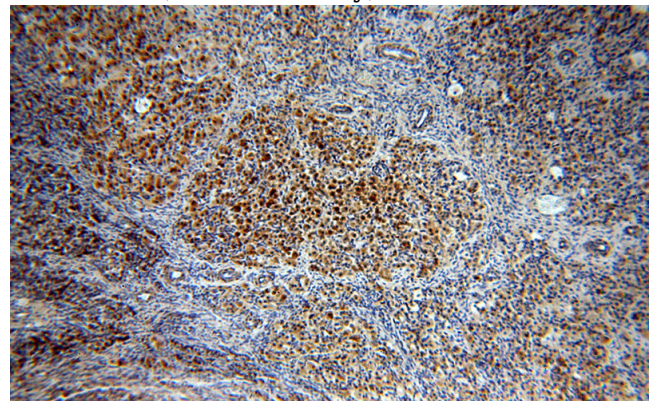
Recommended Dilution:

WB: 1:200-1:1000

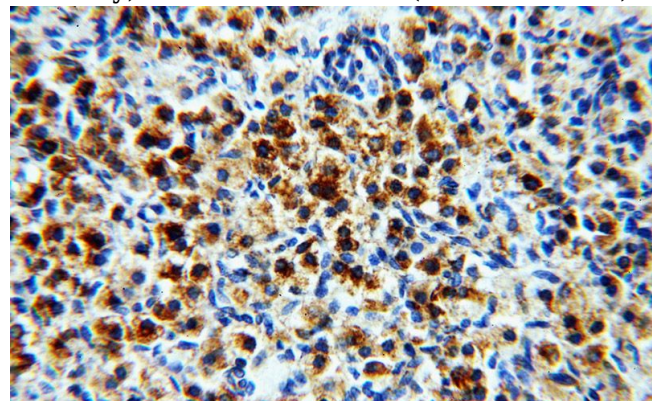
## Validations



human skeletal muscle tissue were subjected to SDS PAGE followed by western blot with Catalog No:113499(PAK2 antibody) at dilution of 1:300



Immunohistochemical of paraffin-embedded human ovary using Catalog No:113499(PAK2 antibody) at dilution of 1:100 (under 10x lens)



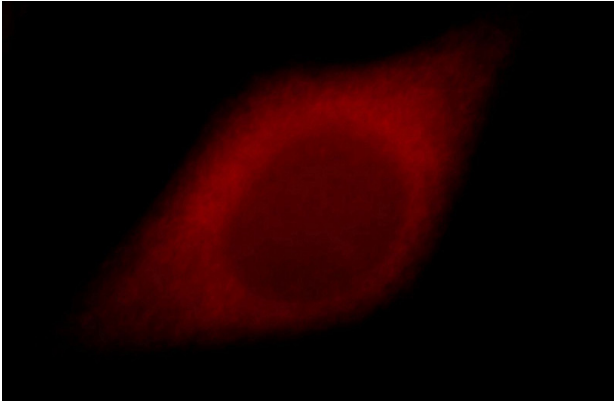
Immunohistochemical of paraffin-embedded human ovary using Catalog No:113499(PAK2

# PAK2 antibody

Catalog Number: 113499

---

antibody) at dilution of 1:100 (under 40x lens)



Immunofluorescent analysis of HeLa cells, using PAK2 antibody Catalog No:113499 at 1:25 dilution and Rhodamine-labeled goat anti-rabbit IgG (red).