

Anti-Phospho-Tau (Thr205) Rabbit antibody



Catalog Number: 167099

Product name

Anti-Phospho-Tau (Thr205) Rabbit antibody

Ig Type

Rabbit IgG

Specificity

Human

Applications

WB

Antibody description

Phospho-Tau (Thr205) Rabbit polyclonal antibody

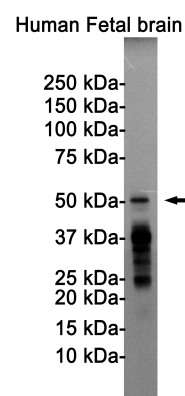
Dilutions

WB: 1/1000

Preparation

Antigen: A synthetic phosphopeptide corresponding to residues surrounding Thr205 of human Tau

Validations



Formulation

Supplied in 50nM Tris-Glycine(pH 7.4), 0.15M NaCl, 40%Glycerol, 0.01% sodium azide and 0.05% BSA.

Storage

Store at -20°C. Stable for 12 months from date of receipt.

Clonality

Polyclonal

Western blot detection of Tau (Phospho-Thr205) in Human Fetal brain cell lysates using Tau (Phospho-Thr205) Rabbit pAb(1:1000 diluted). Predicted band size: 79KDa. Observed band size: 50-80KDa.