

# GMFG antibody



Catalog Number: 111099

## Product name

GMFG antibody

## Specificity

Human, Mouse, Rat; other species not tested.

## Antibody description

GMFG Rabbit Polyclonal antibody. Positive IHC detected in human lung cancer tissue, human heart tissue, human kidney tissue, human placenta tissue, human spleen tissue, human testis tissue. Positive WB detected in rat brain tissue, human heart tissue, human placenta tissue, mouse placenta tissue. Positive IP detected in mouse spleen tissue. Observed molecular weight by Western-blot: 17 kDa

## Preparation

This antibody was obtained by immunization of GMFG recombinant protein (Accession Number: NM\_004877). Purification method: Antigen affinity purified.

## Formulation

PBS with 0.02% sodium azide and 50% glycerol pH 7.3.

## Storage

Store at -20°C. DO NOT ALIQUOT

## Clonality

Polyclonal

## Ig Type

Rabbit IgG

## Applications

ELISA, IHC, IP, WB

## Dilutions

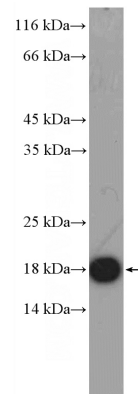
Recommended Dilution:

WB: 1:200-1:2000

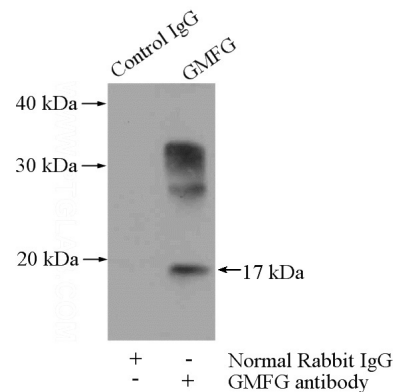
IP: 1:200-1:2000

IHC: 1:20-1:200

## Validations



rat brain tissue were subjected to SDS PAGE followed by western blot with Catalog No:111099(GMFG Antibody) at dilution of 1:600

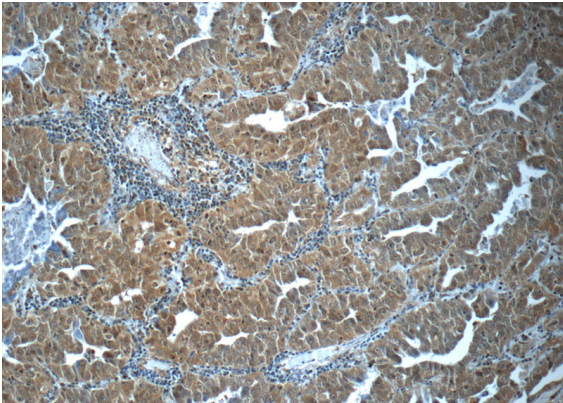


IP Result of anti-GMFG (IP:Catalog No:111099, 4ug; Detection:Catalog No:111099 1:500) with mouse spleen tissue lysate 4000ug.

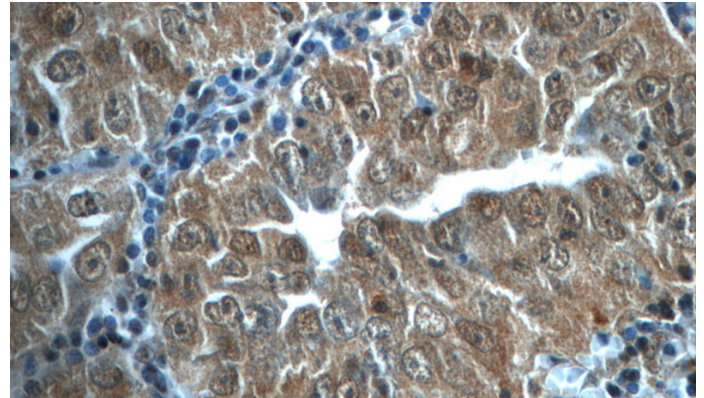
# GMFG antibody

Catalog Number: 111099

---



Immunohistochemistry of paraffin-embedded human lung cancer tissue slide using Catalog No:111099(GMFG Antibody) at dilution of 1:50 (under 10x lens)



Immunohistochemistry of paraffin-embedded human lung cancer tissue slide using Catalog No:111099(GMFG Antibody) at dilution of 1:50 (under 40x lens)