

CDC25B Polyclonal Antibody



Catalog Number: 160099

Product name

CDC25B Polyclonal Antibody

Specificity

Human

Antibody description

Polyclonal antibody to CDC25B

Preparation

Antigen: Recombinant fusion protein containing a sequence corresponding to amino acids 1-250 of human CDC25B (NP_068659.1).

Formulation

PBS with 0.02% sodium azide, 50% glycerol, pH7.3.

Storage

Store at -20°C. Avoid freeze / thaw cycles.

Clonality

Polyclonal

Ig Type

Rabbit IgG

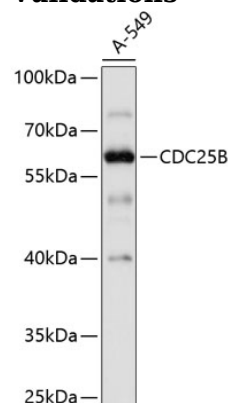
Applications

WB

Dilutions

WB 1:500 - 1:1000

Validations



Western blot - CDC25B Polyclonal Antibody

Western blot analysis of extracts of A-549 cells, using CDC25B antibody at 1:1000 dilution. Secondary antibody: HRP Goat Anti-Rabbit IgG (H+L) at 1:10000 dilution. Lysates/proteins: 25ug per lane. Blocking buffer: 3% nonfat dry milk in TBST. Detection: ECL Basic Kit. Exposure time: 5s.