

# Anti-EpCAM Rabbit antibody



Catalog Number: 168789

## Product name

Anti-EpCAM Rabbit antibody

## Specificity

Human, Mouse, Rat

## Antibody description

EpCAM Rabbit monoclonal antibody

## Preparation

Antigen: Recombinant protein of human EpCAM

## Formulation

50nM Tris-Glycine(pH 7.4), 0.15M NaCl, 40%Glycerol, 0.01% sodium azide and 0.05% BSA.

## Storage

Store at 4°C short term. Store at -20°C long term. Avoid freeze / thaw cycle.

## Clonality

Monoclonal

## Ig Type

Rabbit IgG

## Applications

WB, IHC-P, ICC/IF, IP

## Dilutions

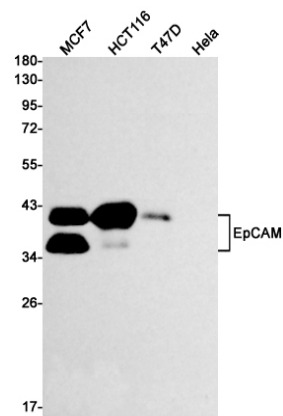
WB: 1/1000

IHC: 1/500

ICC/IF: 1/20

IP: 1/20

## Validations



Western blot detection of EpCAM in MCF7, HCT116, T47D, HeLa cell lysates using EpCAM Rabbit mAb(1:1000 diluted). Predicted band size: 35kDa. Observed band size: 40kDa.