

Anti-CLIC2 antibody



Catalog Number: 175789

Product name

Anti-CLIC2 antibody

Specificity

Human, Mouse, Rat

Antibody description

Rabbit polyclonal antibody to CLIC2

Preparation

This antigen of this antibody was recombinant protein within human clic2 aa 80-247.

Formulation

Liquid, 1*TBS (pH7.4), 0.2% BSA, 50% Glycerol.
Preservative: 0.05% Sodium Azide.

Storage

Store at +4°C after thawing. Aliquot store at -20°C. Avoid repeated freeze / thaw cycles.

Clonality

Polyclonal

Ig Type

Rabbit IgG

Applications

WB, FC

Dilutions

WB: 1:500-1:1,000

FC: 1:50-1:100

Validations

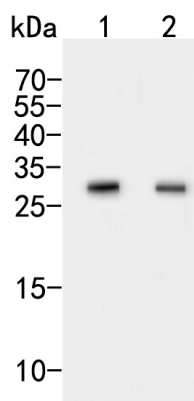


Fig1:: Western blot analysis of CLIC2 on different lysates. Proteins were transferred to a PVDF membrane and blocked with 5% BSA in PBS for 1 hour at room temperature. The primary antibody (1/500) was used in 5% BSA at room temperature for 2 hours. Goat Anti-Rabbit IgG - HRP Secondary Antibody (HA1001) at 1:5,000 dilution was used for 1 hour at room temperature.; Positive control.; Lane 1: K562 cell lysate; Lane 2: Mouse lung

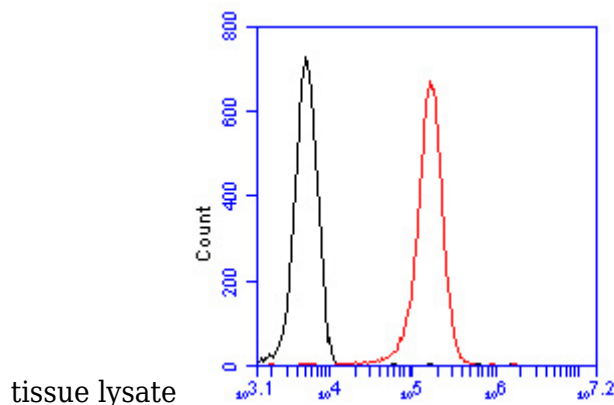


Fig2:: Flow cytometric analysis of CLIC2 was done on K562 cells. The cells were fixed, permeabilized and stained with the primary antibody (1/50) (red). After incubation of the primary antibody at room temperature for an hour, the cells were stained with a Alexa Fluor 488-conjugated Goat anti-Rabbit IgG Secondary antibody at 1/1000 dilution for 30 minutes. Unlabelled sample was used as a control (cells without incubation with primary antibody; black).