

General Information

Protein Construction

A DNA sequence encoding human VSNL1 (Gly2-Lys191) was expressed with a N-terminal Met.

Organism

Human

Expression Host

E. coli

QC Testing

Purity

> 95 % as determined by SDS-PAGE

Endotoxin

Please contact us for more information.

Stability

Samples are stable for up to twelve months from date of receipt at -70°C

Predicted N terminal

Met

Molecular Mass

The recombinant human VSNL1 consists of 191 amino acids and predicts a molecular mass of 22.1 KDa. It migrates as an approximately 19 KDa band

in SDS-PAGE under reducing conditions.

Formulation

Lyophilized from sterile 50mM Tris, 10% glycerol, pH 8.0.

1. 5 % trehalose and mannitol are added as protectants before lyophilization.
2. Please contact us for any concerns or special requirements.

Usage Guide

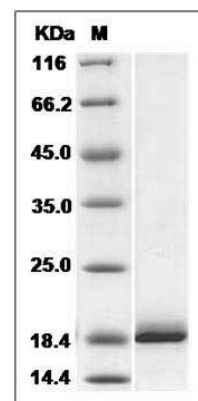
Storage

Store it under sterile conditions at -20°C to -80°C. It is recommended that the protein be aliquoted for optimal storage. Avoid repeated freeze-thaw cycles.

Reconstitution

Adding sterile water, prepare a stock solution of 0.25 mg/ml. Concentration is measured by UV-Vis.

SDS-PAGE



Human VILIP-1 / VSNL1 Protein SDS-PAGE