

# Anti-KRT17 antibody

Catalog Number: 142789

## Product name

Anti-KRT17 antibody

## Specificity

Human KRT17/Cytokeratin17

## Antibody description

Rabbit Polyclonal to Human KRT17

## Preparation

Produced in rabbits immunized with a synthetic peptide corresponding to the C-terminus of the Human KRT17/Cytokeratin17, and purified by antigen affinity chromatography.

## Formulation

0.2 µm filtered solution in PBS

## Storage

This antibody can be stored at 2°C-8°C for one month without detectable loss of activity. Antibody products are stable for twelve months from date of receipt when stored at -20°C to -80°C.

Preservative-Free.

Sodium azide is recommended to avoid contamination (final concentration 0.05%-0.1%). It is toxic to cells and should be disposed of properly. Avoid repeated freeze-thaw cycles.

## Clonality

Polyclonal

## Ig Type

Rabbit IgG

## Applications

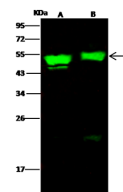
WB, ICC/IF, IF

## Dilutions

WB: 1-5 µg/ml

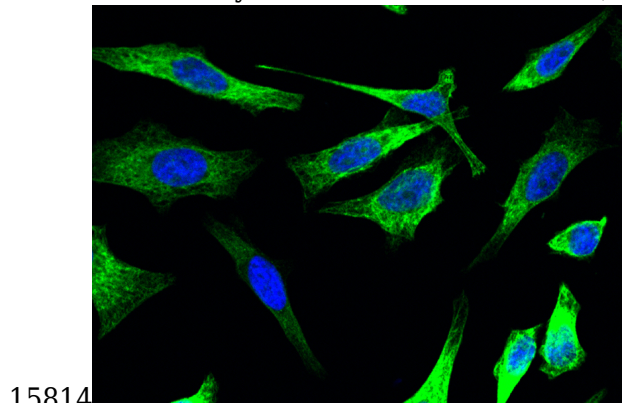
ICC/IF: 0.5-3µg/mL

## Validations



| Lanes                      | A   | B    |
|----------------------------|---|------|
| Items                      |   |      |
| Sample (whole cell lysate) | A431  | HeLa |
| Sample Volume (µg/lane)    | 30  | 30   |
| Gel                        | 13% SDS-PAGE reducing gel   |      |
| Recommended Concentration  | 1.5 µg/ml   |      |
| Secondary Antibody         | Dylight 800 labeled Antibody to Rabbit IgG (H+L) at 1:5000 dilution.  |      |
| Explanation                | Developed using Odyssey imaging system.<br>Predicted band size : 48 kDa<br>Observed band size : 52 kDa<br>Additional bands at : 22 kDa (We are unsure as to the identity of these extra bands.) |      |

## Human KRT17/Cytokeratin17 Western blot (WB)



Human KRT17/Cytokeratin17  
Immunofluorescence(IF) 15815