

INF2 antibody



Catalog Number: 111789

Product name

INF2 antibody

Immunogen

[Human INF2 Recombinant protein \(GST tag\)](#)

Specificity

Human, Mouse; other species not tested.

Antibody description

INF2 Rabbit Polyclonal antibody. Positive WB detected in A431 cells, HeLa cells, mouse brain tissue, NIH/3T3 cells. Positive IP detected in NIH/3T3 cells. Positive IHC detected in human kidney tissue. Positive IF detected in NIH/3T3 cells. Observed molecular weight by Western-blot: 180-200 kDa

Preparation

This antibody was obtained by immunization of INF2 recombinant protein (Accession Number: BC008756). Purification method: Antigen affinity purified.

Formulation

PBS with 0.02% sodium azide and 50% glycerol pH 7.3.

Storage

Store at -20°C. DO NOT ALIQUOT

Clonality

Polyclonal

Ig Type

Rabbit IgG

Applications

ELISA, WB, IHC, IF, IP

Dilutions

Recommended Dilution:

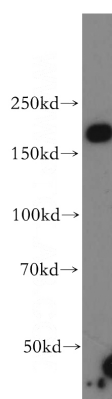
WB: 1:1000-1:10000

IP: 1:200-1:2000

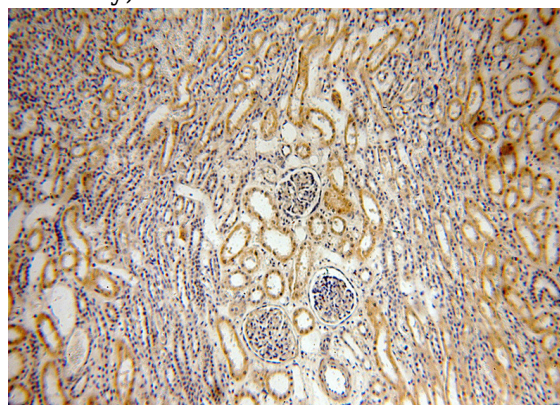
IHC: 1:20-1:200

IF: 1:20-1:200

Validations



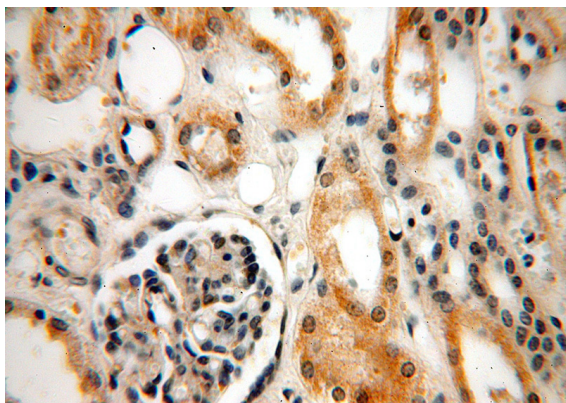
A431 cells were subjected to SDS PAGE followed by western blot with Catalog No:111789(INF2 antibody) at dilution of 1:500



Immunohistochemical of paraffin-embedded human kidney using Catalog No:111789(INF2 antibody) at dilution of 1:100 (under 10x lens)

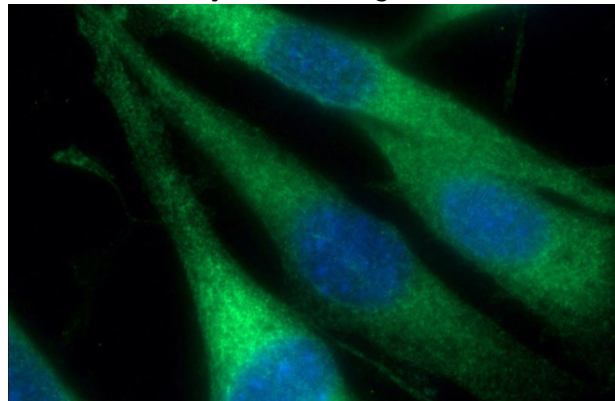
INF2 antibody

Catalog Number: 111789



Immunohistochemical of paraffin-embedded human kidney using Catalog No:111789(INF2 antibody) at dilution of 1:100 (under 40x lens)

IP Result of anti-INF2 (IP:Catalog No:111789, 4ug; Detection:Catalog No:111789 1:500) with NIH/3T3 cells lysate 4000ug.



Immunofluorescent analysis of (-20oc Ethanol) fixed NIH/3T3 cells using Catalog No:111789(INF2 Antibody) at dilution of 1:50 and Alexa Fluor 488-conjugated AffiniPure Goat Anti-Rabbit IgG(H+L)

