

# Phospho-SYK-Y323 pAb



Catalog Number: 166389

## Product name

Phospho-SYK-Y323 pAb

## Specificity

Human

## Antibody description

Polyclonal antibody to Phospho-SYK-Y323

## Preparation

Antigen: A phospho specific peptide corresponding to residues surrounding Y323 of human SYK

## Formulation

PBS with 0.02% sodium azide, 50% glycerol, pH7.3.

## Storage

Store at -20°C. Avoid freeze / thaw cycles.

## Clonality

Polyclonal

## Ig Type

Rabbit IgG

## Applications

WB, IHC, IF

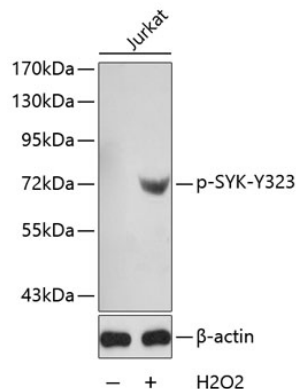
## Dilutions

WB 1:500 - 1:2000

IHC 1:50 - 1:100

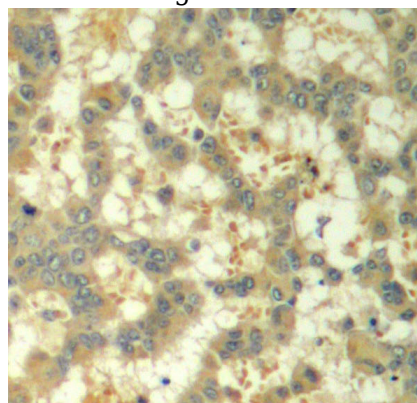
IF 1:100 - 1:200

## Validations



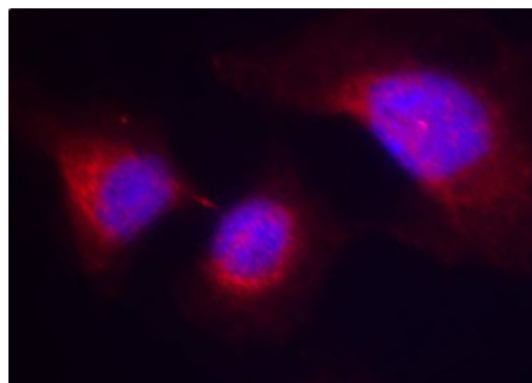
Western blot - Phospho-SYK-Y323 pAb

Western blot analysis of extracts from Jurkat cells using phospho-SYK-Y323 antibody. Secondary antibody: HRP Goat Anti-Rabbit IgG (H+L) at 1:10000 dilution. Lysates/proteins: 25ug per lane. Blocking buffer: 3% BSA.



Immunohistochemistry - Phospho-SYK-Y323 pAb

Immunohistochemistry of paraffin-embedded human breast carcinoma using Phospho-SYK-Y323 antibody.



Immunofluorescence - Phospho-SYK-Y323 pAb

# Phospho-SYK-Y323 pAb



Catalog Number: 166389

---

Immunofluorescence analysis of methanol-fixed

HeLa cells using Phospho-SYK-Y323 antibody .