

# Anti-CoV Spike glycoprotein antibody



Catalog Number: 105389

## Product name

Anti-CoV Spike glycoprotein antibody

## Immunogen

[SARS CoV Spike glycoprotein \(His Tag\)](#)

## Specificity

Human SARS Coronavirus Spike S1 Subunit

## Antibody description

Rabbit polyclonal to CoV Spike glycoprotein

## Preparation

Produced in rabbits immunized with purified, recombinant Human SARS Coronavirus Spike S1 Subunit (rh Human SARS Coronavirus Spike S1 Subunit; AAX16192.1; Met1-Arg667). Human SARS Coronavirus Spike S1 Subunit specific IgG was purified by Human SARS Coronavirus Spike S1 Subunit affinity chromatography.

## Formulation

0.2 µm filtered solution in PBS

## Storage

This antibody can be stored at 2°C-8°C for one month without detectable loss of activity. Antibody products are stable for twelve months from date of receipt when stored at -20°C to -80°C.

Preservative-Free.

Sodium azide is recommended to avoid contamination (final concentration 0.05%-0.1%). It is toxic to cells and should be disposed of properly. Avoid repeated freeze-thaw cycles.

## Clonality

Polyclonal

## Ig Type

Rabbit IgG

## Applications

ELISA, WB, IHC-P, IP

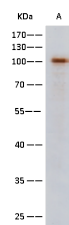
## Dilutions

WB: 0.5-1 µg/ml

ELISA: 0.1-0.2 µg/mL

This antibody can be used at 0.1-0.2 µg/mL with the appropriate secondary reagents to detect Human SARS Coronavirus Spike S1 Subunit. The detection limit for Human SARS Coronavirus Spike S1 Subunit is < 0.039 ng/well.

## Validations



Items	Lanes
Sample (Recombinant protein)	A SARS-Spike-S1-His(1-667)
Sample Volume (ng/lane)	30ng
Gel	13% SDS-PAGE reducing gel
Recommended Concentration	1µg/ml
Secondary Antibody	HRP Conjugated Goat anti-rabbit IgG (His1) at 1:1000 dilution

Human SARS Coronavirus Spike S1 Subunit Antibody, Rabbit PAb, Antigen Affinity Purified, Western blot