

Anti-IRX2 antibody



Catalog Number: 176689

Product name

Anti-IRX2 antibody

Specificity

Human, Mouse

Antibody description

Rabbit polyclonal antibody to IRX2

Preparation

This antigen of this antibody was peptide

Formulation

Liquid, 1*PBS (pH7.4), 0.2% BSA, 40% Glycerol.
Preservative: 0.05% Sodium Azide.

Storage

Store at +4°C after thawing. Aliquot store at -20°C or -80°C. Avoid repeated freeze / thaw cycles.

Clonality

Polyclonal

Ig Type

Rabbit IgG

Applications

WB, ICC

Dilutions

WB: 1:1,000

ICC: 1:50-1:100

Validations

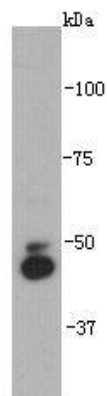


Fig1: Western blot analysis on HeLa cell lysates using anti-IRX2 rabbit polyclonal antibodies.

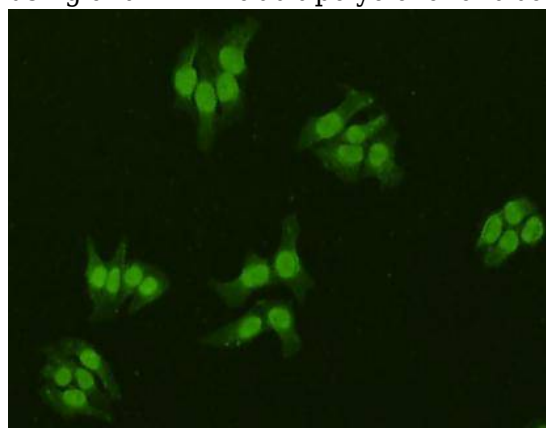


Fig2: Immunofluorescent staining of HeLa cells using anti- IRX2rabbit polyclonal antibody.