

Anti-LRRC39 antibody



Catalog Number: 142689

Product name

Anti-LRRC39 antibody

Specificity

Human LRRC39

Antibody description

Rabbit Polyclonal to Human LRRC39

Preparation

Produced in rabbits immunized with a synthetic peptide corresponding to the C-terminus of the Human LRRC39, and purified by antigen affinity chromatography.

Formulation

0.2 µm filtered solution in PBS

Storage

This antibody can be stored at 2°C-8°C for one month without detectable loss of activity. Antibody products are stable for twelve months from date of receipt when stored at -20°C to -80°C.

Preservative-Free.

Sodium azide is recommended to avoid contamination (final concentration 0.05%-0.1%). It

is toxic to cells and should be disposed of properly. Avoid repeated freeze-thaw cycles.

Clonality

Polyclonal

Ig Type

Rabbit IgG

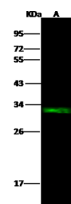
Applications

WB

Dilutions

WB: 5-20 µg/ml

Validations



Items	Lanes
Sample (whole cell lysate)	A
Sample Volume (µg/Lane)	MDA-MB231
Gel	30
Recommended Concentration	13% SDS-PAGE reducing gel
Secondary Antibody	5-20 µg/ml
Explanation	Dylight 800-labeled Antibody To Rabbit IgG (H+L), at 1:5000 dilution. Developed using Odyssey imaging system. Predicted band size : 39 kDa Observed band size : 32 kDa

Human LRRC39 Western blot (WB) 14671