

# SKP1 antibody

Catalog Number: 115289

## Product name

SKP1 antibody

## Immunogen

[Human SKP1 Recombinant protein \(GST tag\)](#)

## Specificity

Human, Mouse, Rat; other species not tested.

## Antibody description

SKP1 Rabbit Polyclonal antibody. Positive IHC detected in human gliomas tissue. Positive IF detected in HepG2 cells. Positive WB detected in human brain tissue, HeLa cells. Observed molecular weight by Western-blot: 19 kDa

## Preparation

This antibody was obtained by immunization of SKP1 recombinant protein (Accession Number: NM\_170679). Purification method: Antigen affinity purified.

## Formulation

PBS with 0.1% sodium azide and 50% glycerol pH 7.3.

## Storage

Store at -20°C. DO NOT ALIQUOT

## Clonality

Polyclonal

## Ig Type

Rabbit IgG

## Applications

ELISA, WB, IHC, IF

## Dilutions

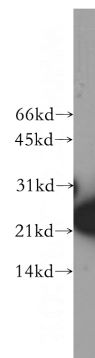
Recommended Dilution:

WB: 1:200-1:2000

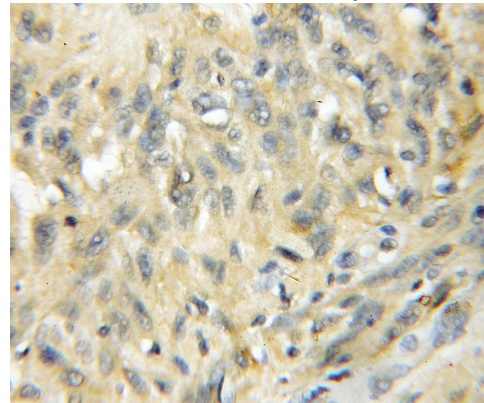
IHC: 1:20-1:200

IF: 1:10-1:100

## Validations



human brain tissue were subjected to SDS PAGE followed by western blot with Catalog No:115289(SKP1 antibody) at dilution of 1:500

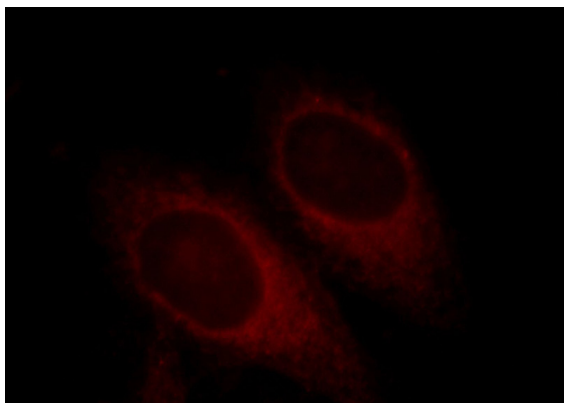


Immunohistochemical of paraffin-embedded human gliomas using Catalog No:115289(SKP1 antibody) at dilution of 1:50 (under 10x lens)

# SKP1 antibody

Catalog Number: 115289

---



Immunofluorescent analysis of HepG2 cells, using SKP1 antibody Catalog No:115289 at 1:25 dilution and Rhodamine-labeled goat anti-rabbit IgG (red).