

CDC14A Polyclonal Antibody



Catalog Number: 164289

Product name

CDC14A Polyclonal Antibody

Specificity

Human, Mouse

Antibody description

Polyclonal antibody to CDC14A

Preparation

Antigen: A synthetic Peptide of human CDC14A

Formulation

PBS with 0.02% sodium azide, pH7.3.

Storage

Store at 4°C. Avoid freeze / thaw cycles.

Clonality

Polyclonal

Ig Type

Rabbit IgG

Applications

WB, IHC, FC

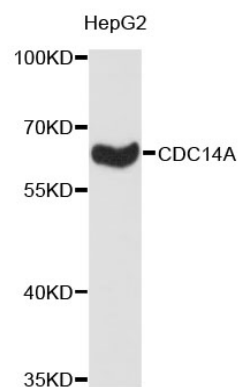
Dilutions

WB 1:500 - 1:1000

IHC 1:20 - 1:50

FC 1:20 - 1:50

Validations



Western blot - CDC14A Polyclonal Antibody

Western blot analysis of extracts of HepG2 cells, using CDC14A antibody. Secondary antibody: HRP Goat Anti-Rabbit IgG (H+L) at 1:10000 dilution. Lysates/proteins: 25ug per lane. Blocking buffer: 3% nonfat dry milk in TBST.