

# NSFL1C antibody



Catalog Number: 113289

## Product name

NSFL1C antibody

Recommended Dilution:

WB: 1:200-1:2000

## Immunogen

IHC: 1:50-1:500

[Human NSFL1C Recombinant protein \(His tag\)](#)

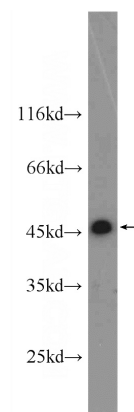
## Validations

## Specificity

Human, Mouse; other species not tested.

## Antibody description

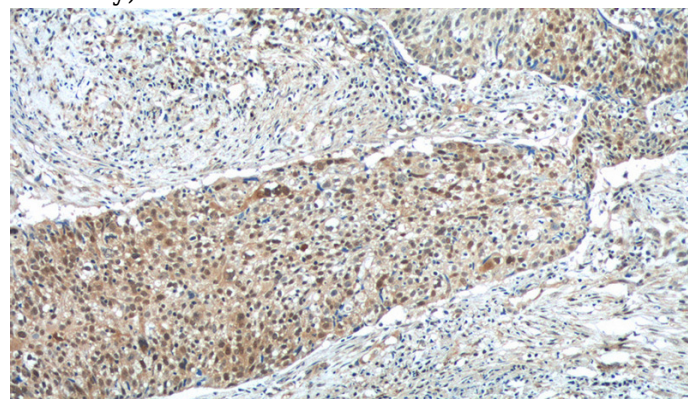
NSFL1C Rabbit Polyclonal antibody. Positive WB detected in A431 cells, HEK-293 cells, mouse liver tissue. Positive IHC detected in human lung cancer tissue, human liver cancer tissue. Observed molecular weight by Western-blot: 47 kDa



A431 cells were subjected to SDS PAGE followed by western blot with Catalog No:113289(NSFL1C antibody) at dilution of 1:800

## Preparation

This antibody was obtained by immunization of NSFL1C recombinant protein (Accession Number: NM\_016143). Purification method: Antigen affinity purified.



## Formulation

PBS with 0.1% sodium azide and 50% glycerol pH 7.3.

## Storage

Store at -20°C. DO NOT ALIQUOT

## Clonality

Polyclonal

## Ig Type

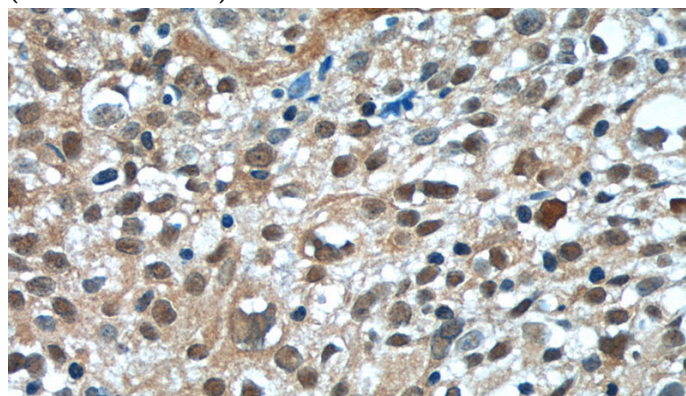
Rabbit IgG

## Applications

ELISA, WB, IHC

## Dilutions

Immunohistochemistry of paraffin-embedded human lung cancer tissue slide using Catalog No:113289(NSFL1C Antibody) at dilution of 1:50 (under 10x lens)



# NSFL1C antibody



Catalog Number: 113289

---

Immunohistochemistry of paraffin-embedded human lung cancer tissue slide using Catalog

No:113289(NSFL1C Antibody) at dilution of 1:50 (under 40x lens)