

Anti-CXCL16 / SR-PSOX antibody



Catalog Number: 101289

Product name

Anti-CXCL16 / SR-PSOX antibody

Immunogen

[Mouse CXCL16 / SR-PSOX \(His Tag\) recombinant protein](#)

Specificity

Mouse CXCL16 / SR-PSOX

Antibody description

Rabbit polyclonal to CXCL16 / SR-PSOX

Preparation

Produced in rabbits immunized with purified, recombinant Mouse CXCL16 / SR-PSOX (rh CXCL16 / SR-PSOX; NP_075647.3; Met1-Trp201). CXCL16 / SR-PSOX specific IgG was purified by Mouse CXCL16 / SR-PSOX affinity chromatography.

Formulation

0.2 μ m filtered solution in PBS

Storage

This antibody can be stored at 2°C-8°C for one month without detectable loss of activity. Antibody products are stable for twelve months from date of receipt when stored at -20°C to -80°C.

Preservative-Free.

Sodium azide is recommended to avoid contamination (final concentration 0.05%-0.1%). It is toxic to cells and should be disposed of

properly. Avoid repeated freeze-thaw cycles.

Clonality

Polyclonal

Ig Type

Rabbit IgG

Applications

ELISA, WB

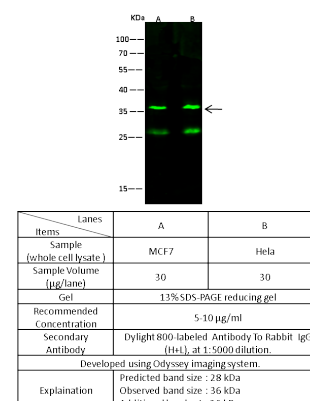
Dilutions

WB: 5-10 μ g/mL

ELISA: 0.1-0.2 μ g/mL

This antibody can be used at 0.1-0.2 μ g/mL with the appropriate secondary reagents to detect Mouse CXCL16 / SR-PSOX. The detection limit for Mouse CXCL16 / SR-PSOX is < 0.039 ng/well.

Validations



CXCL16 / SR-PSOX Antibody, Rabbit PAb, Antigen Affinity Purified, Western blot