

# E-cadherin antibody



Catalog Number: 110289

## Product name

E-cadherin antibody

IHC: 1:20-1:200

IF: 1:10-1:100

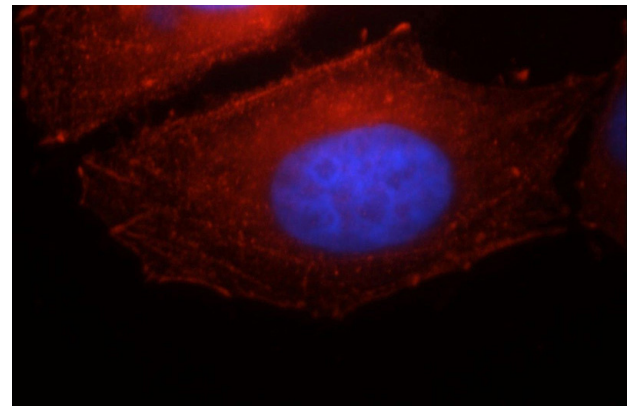
## Specificity

Human, Mouse, Rat; other species not tested.

## Validations

## Antibody description

E-cadherin Rabbit Polyclonal antibody. Positive FC detected in HepG2 cells. Positive IF detected in HepG2 cells. Positive IHC detected in human colon cancer tissue, human liver cancer tissue. Positive WB detected in PC-3 cells. Observed molecular weight by Western-blot: 97 kDa, 124 kDa



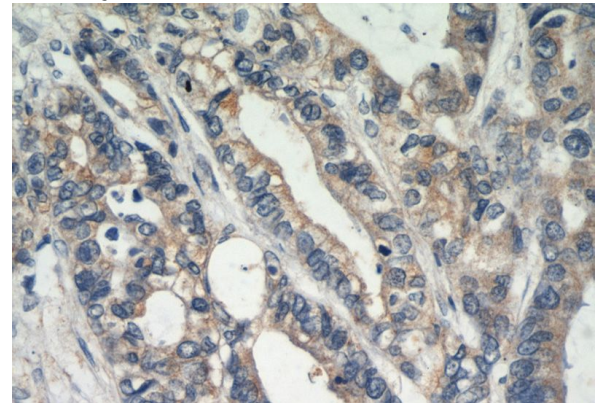
## Preparation

This antibody was obtained by immunization of Peptide (Accession Number: NM\_004360). Purification method: Antigen affinity purified.

Immunofluorescent analysis of HepG2 cells, using CDH1 antibody Catalog No:110289 at 1:25 dilution and Rhodamine-labeled goat anti-rabbit IgG (red). Blue pseudocolor = DAPI (fluorescent DNA dye).

## Formulation

PBS with 0.02% sodium azide and 50% glycerol pH 7.3.



## Storage

Store at -20°C. DO NOT ALIQUOT

## Clonality

Polyclonal

## Ig Type

Rabbit IgG

Immunohistochemical of paraffin-embedded human colon cancer using Catalog No:110289(CDH1-Specific antibody) at dilution of 1:50 (under 40x lens)

## Applications

ELISA, WB, IF, IHC, FC

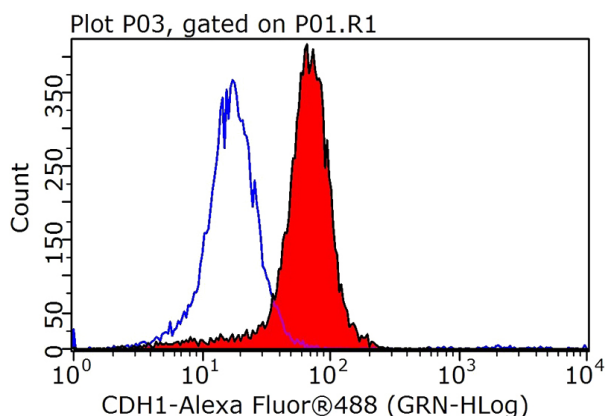
## Dilutions

Recommended Dilution:

WB: 1:200-1:2000

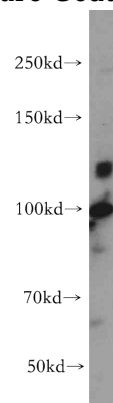
# E-cadherin antibody

Catalog Number: 110289



1X10<sup>6</sup> HepG2 cells were stained with 0.2ug CDH1-Specific antibody (Catalog No:110289, red) and control antibody (blue). Fixed with 4% PFA blocked with 3% BSA (30 min). Alexa Fluor 488-

conjugated AffiniPure Goat Anti-Rabbit IgG(H+L)



with dilution 1:200.

PC-3 cells were subjected to SDS PAGE followed by western blot with Catalog No:110289(CDH1-Specific antibody) at dilution of 1:500