

Anti-Phospho-NF-κB p65 (Ser536) Rabbit antibody



Catalog Number: 166989

Product name

Anti-Phospho-NF-κB p65 (Ser536) Rabbit antibody

Specificity

Human, Mouse, Rat

Antibody description

Phospho-NF-κB p65 (Ser536) Rabbit polyclonal antibody

Preparation

Antigen: Peptide sequence around phosphorylation site of serine 536 (F-S-S(p)-I-A) derived from Human NFκB-p65.

Formulation

Supplied at 1.0mg/mL in phosphate buffered saline (without Mg²⁺ and Ca²⁺), pH 7.4, 150mM NaCl, 0.02% sodium azide and 50% glycerol.

Storage

Store at 4°C short term. Store at -20°C long term. Avoid freeze / thaw cycle.

Clonality

Polyclonal

Ig Type

Rabbit IgG

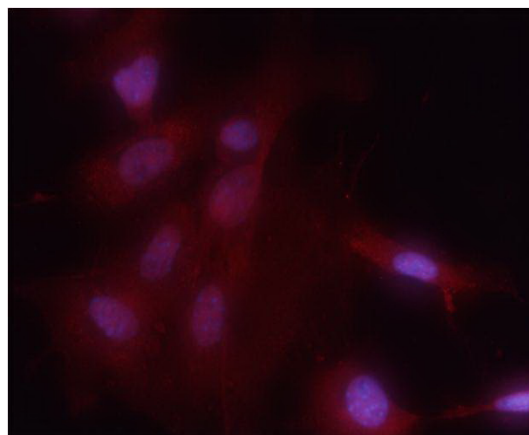
Applications

WB, IHC-P, ICC/IF

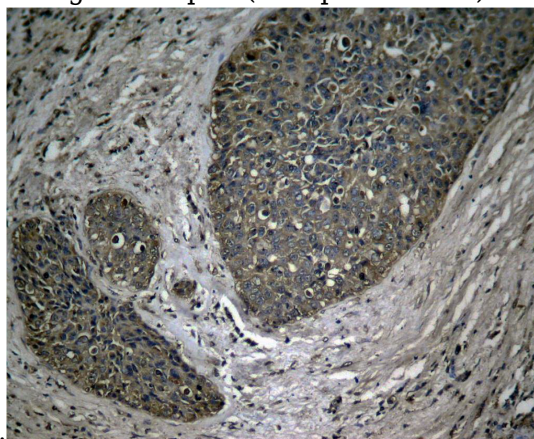
Dilutions

WB:1/500-1/1000 ICC:1/100-1/200 IHC:1/50-1/100

Validations

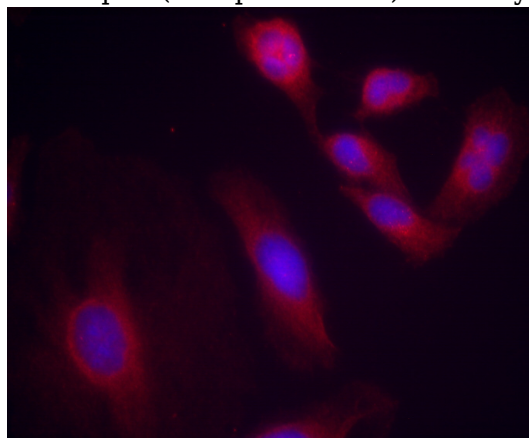


Immunofluorescence staining of methanol-fixed MEF cells using NF-κB p65 (Phospho-Ser536)



Antibody .

Immunohistochemical analysis of paraffin-embedded human breast carcinoma tissue using NF-κB p65 (Phospho-Ser536) Antibody .

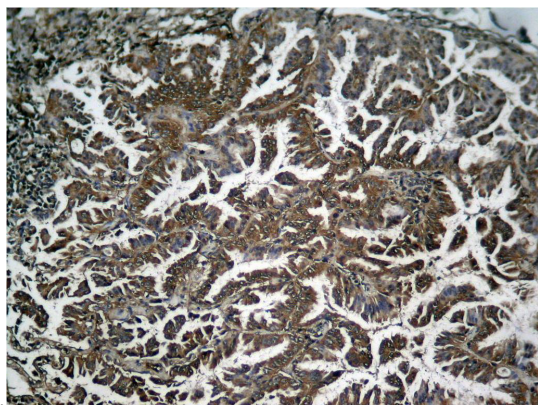


Immunofluorescence staining of methanol-fixed Hela cells using NF-κB p65 (Phospho-Ser536)

Anti-Phospho-NF-kB p65 (Ser536) Rabbit antibody

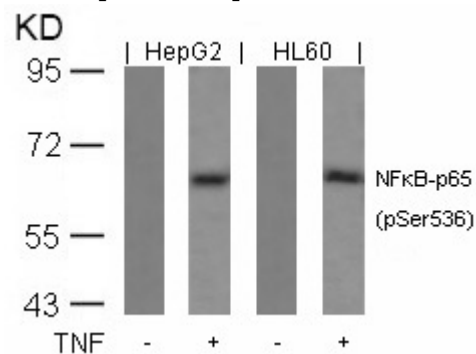


Catalog Number: 166989

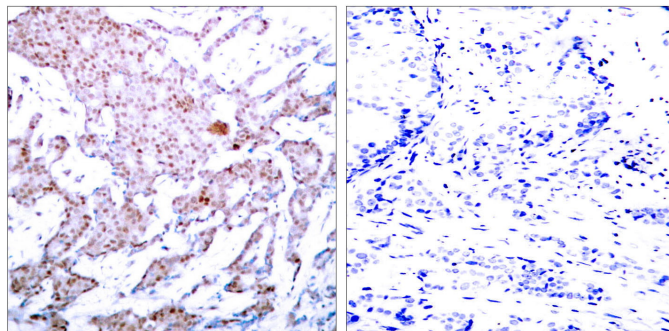


Antibody .

Immunohistochemical analysis of paraffin-embedded human Lung carcinoma tissue using NF- κ B p65 (Phospho-Ser536) Antibody .



Western blot analysis of extracts from HepG2 and HL60 cells untreated or treated with TNF using NF- κ B p65 (Phospho-Ser536) Antibody .



Immunohistochemical analysis of paraffin-embedded human breast carcinoma tissue using NF- κ B p65 (Phospho-Ser536) Antibody (left) or the same antibody preincubated with blocking peptide #51014 (right).