

SCD antibody

Catalog Number: 114989

Product name

SCD antibody

Specificity

Human, Rat; other species not tested.

Antibody description

SCD Rabbit Polyclonal antibody. Positive WB detected in rat liver tissue, HEK-293 cells. Positive IHC detected in human liver tissue, human brain tissue. Observed molecular weight by Western-blot: 40 kDa

Preparation

This antibody was obtained by immunization of SCD recombinant protein (Accession Number: BC005807). Purification method: Antigen affinity purified.

Formulation

PBS with 0.02% sodium azide and 50% glycerol pH 7.3.

Storage

Store at -20°C. DO NOT ALIQUOT

Clonality

Polyclonal

Ig Type

Rabbit IgG

Applications

ELISA, IHC, WB

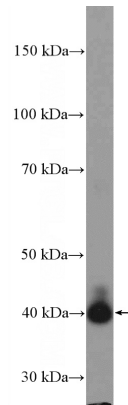
Dilutions

Recommended Dilution:

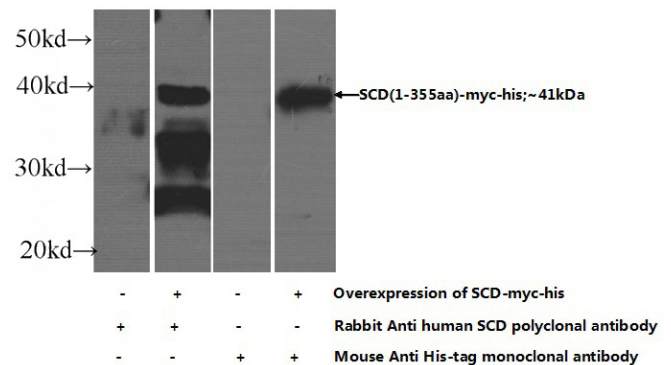
WB: 1:200-1:1000

IHC: 1:20-1:200

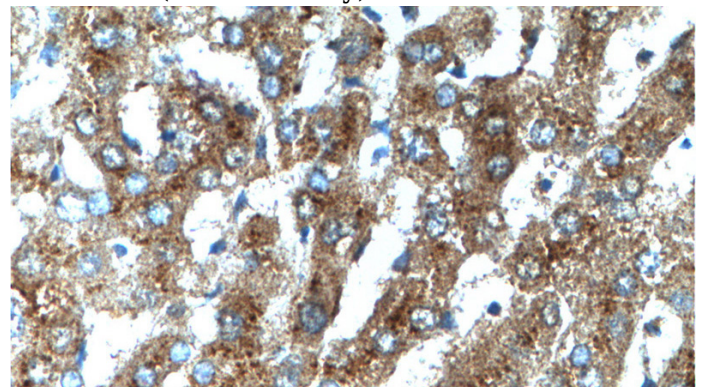
Validations



rat liver tissue were subjected to SDS PAGE followed by western blot with Catalog No:114989(SCD Antibody) at dilution of 1:300



HEK-293 cells were subjected to SDS PAGE followed by western blot with Catalog No:114989(SCD Antibody) at dilution of 1:1000



Immunohistochemistry of paraffin-embedded human liver tissue slide using Catalog No:114989(SCD Antibody) at dilution of 1:200 (under 40x lens).