

MMP27 Polyclonal Antibody



Catalog Number: 163989

Product name

MMP27 Polyclonal Antibody

Specificity

Human, Mouse

Antibody description

Polyclonal antibody to MMP27

Preparation

Antigen: A synthetic peptide of human MMP27

Formulation

PBS with 0.02% sodium azide, 50% glycerol, pH7.3.

Storage

Store at -20°C. Avoid freeze / thaw cycles.

Clonality

Polyclonal

Ig Type

Rabbit IgG

Applications

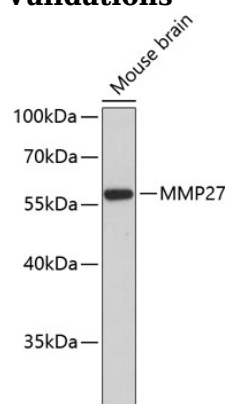
WB, IHC

Dilutions

WB 1:500 - 1:2000

IHC 1:50 - 1:200

Validations



Western blot - MMP27 Polyclonal Antibody

Western blot analysis of extracts of mouse brain, using MMP27 antibody. Secondary antibody: HRP Goat Anti-Rabbit IgG (H+L) at 1:10000 dilution. Lysates/proteins: 25ug per lane. Blocking buffer: 3% nonfat dry milk in TBST.