

# Mouse Cathepsin L/CTSL1 (His Tag) recombinant protein



Catalog Number: 502989

## General Information

### Gene Name Synonym

Cathepsin L; Major excreted protein; p39 cysteine proteinase; Cathepsin L1 heavy chain; Cathepsin L1 light chain

### Protein Construction

A DNA sequence encoding the mouse CTSL (P06797) (Met 1-Asn 334) was expressed, with a C-terminal polyhistidine tag.

### Organism

Mouse

### Expression Host

Human Cells

## QC Testing

### Purity

> 90 % as determined by SDS-PAGE

### Endotoxin

< 1.0 EU per  $\mu\text{g}$  of the protein as determined by the LAL method

### Stability

Samples are stable for up to twelve months from date of receipt at  $-70^{\circ}\text{C}$

### Predicted N terminal

Thr 18

### Molecular Mass

The secreted recombinant mouse CTSL (pro form) consists of 328 amino acids and has a calculated

molecular mass of 37.3 kDa. The recombinant protein migrates as several bands probably including the pro form, mature form, the pro peptide and the cleaved heavy chain in SDS-PAGE under reducing conditions.

### Formulation

Lyophilized from sterile 20mM Tris, 150mM NaCl, pH 7.5

1. 5 % trehalose and mannitol are added as protectants before lyophilization.

2. Please contact us for any concerns or special requirements.

## Usage Guide

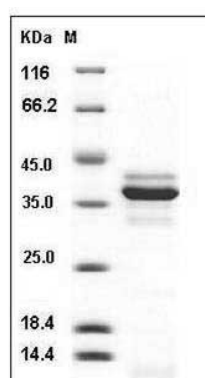
### Storage

Store it under sterile conditions at  $-20^{\circ}\text{C}$  to  $-80^{\circ}\text{C}$ . It is recommended that the protein be aliquoted for optimal storage. Avoid repeated freeze-thaw cycles.

### Reconstitution

Adding sterile water, prepare a stock solution of 0.25 mg/ml. Concentration is measured by UV-Vis.

### SDS-PAGE



Mouse Cathepsin L / CTSL Protein (His Tag) SDS-PAGE