

# Cryptochrome 2 antibody



Catalog Number: 109589

## Product name

Cryptochrome 2 antibody

## Specificity

Human, Mouse, Rat; other species not tested.

## Antibody description

Cryptochrome 2 Rabbit Polyclonal antibody. Positive IP detected in mouse brain tissue. Positive WB detected in Y79 cells. Positive IF detected in SH-SY5Y cells. Observed molecular weight by Western-blot: 65 kDa

## Preparation

This antibody was obtained by immunization of Cryptochrome 2 recombinant protein (Accession Number: NM\_021117). Purification method: Antigen affinity purified.

## Formulation

PBS with 0.02% sodium azide and 50% glycerol pH 7.3.

## Storage

Store at -20°C. DO NOT ALIQUOT

## Clonality

Polyclonal

## Ig Type

Rabbit IgG

## Applications

ELISA, WB, IF, IP

## Dilutions

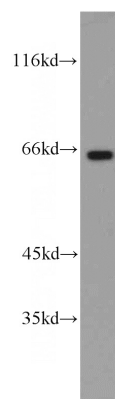
Recommended Dilution:

WB: 1:500-1:5000

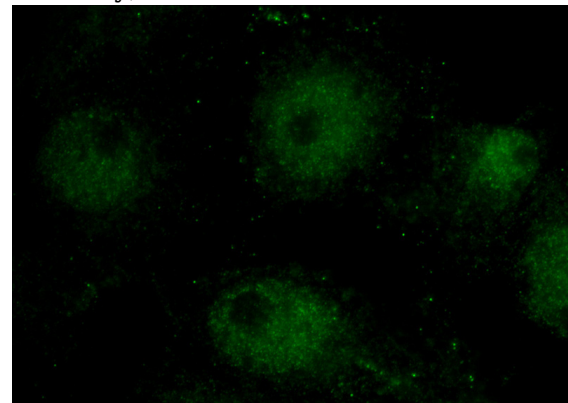
IP: 1:200-1:1000

IF: 1:50-1:500

## Validations



Y79 cells were subjected to SDS PAGE followed by western blot with Catalog No:109589(CRY2 antibody) at dilution of 1:1000



Immunofluorescent analysis of (10% Formaldehyde) fixed SH-SY5Y cells using Catalog No:109589(CRY2 Antibody) at dilution of 1:50 and Alexa Fluor 488-conjugated AffiniPure Goat Anti-Rabbit IgG(H+L)