

# RBAP48 antibody

Catalog Number: 114589

## Product name

RBAP48 antibody

WB: 1:500-1:5000

IP: 1:500-1:5000

## Specificity

Human; other species not tested.

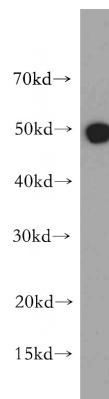
IHC: 1:20-1:200

IF: 1:20-1:200

## Antibody description

RBAP48 Rabbit Polyclonal antibody. Positive IHC detected in human cervical cancer tissue, human breast cancer tissue. Positive IF detected in HeLa cells. Positive WB detected in Jurkat cells, HeLa cells, HepG2 cells, human brain tissue, K-562 cells, L02 cells. Positive IP detected in HeLa cells. Observed molecular weight by Western-blot: 48-50kd

## Validations



## Preparation

This antibody was obtained by immunization of Peptide (Accession Number: NM\_005610). Purification method: Antigen affinity purified.

Jurkat cells were subjected to SDS PAGE followed by western blot with Catalog No:114589(RBBP4 antibody) at dilution of 1:500

## Formulation

PBS with 0.02% sodium azide and 50% glycerol pH 7.3.

## Storage

Store at -20°C. DO NOT ALIQUOT

## Clonality

Polyclonal

## Ig Type

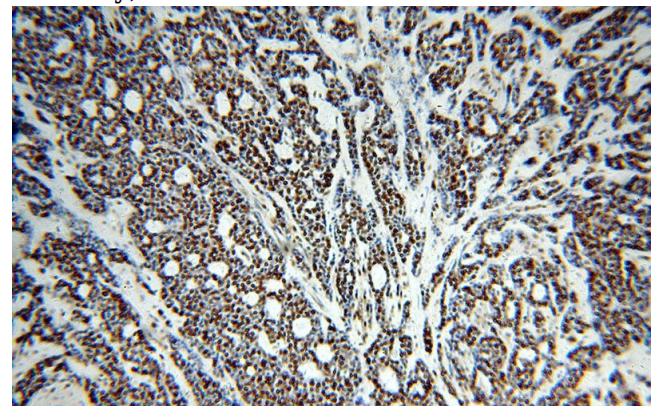
Rabbit IgG

## Applications

ELISA, WB, IHC, IP, IF

## Dilutions

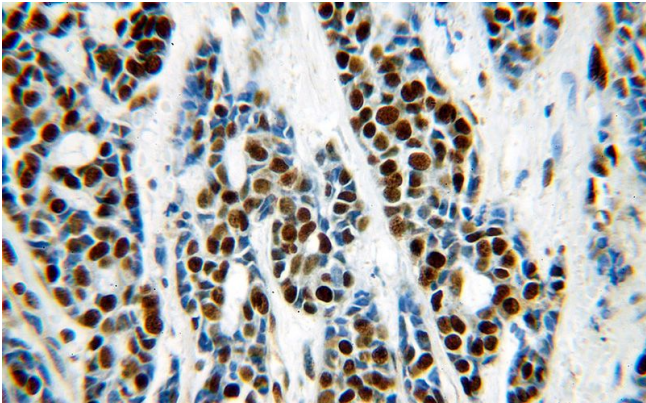
Recommended Dilution:



Immunohistochemical of paraffin-embedded human cervical cancer using Catalog No:114589(RBBP4 antibody) at dilution of 1:100 (under 10x lens)

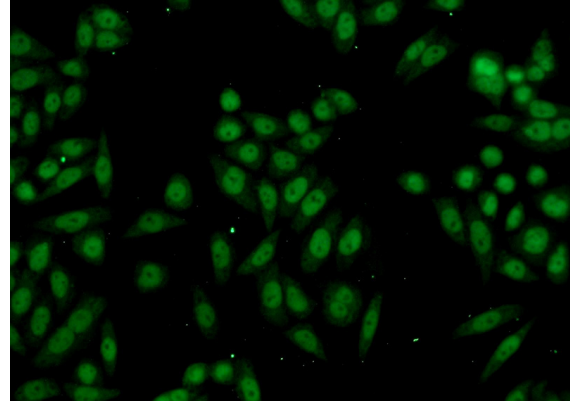
# RBAP48 antibody

Catalog Number: 114589



Immunohistochemical of paraffin-embedded human cervical cancer using Catalog No:114589(RBBP4 antibody) at dilution of 1:100 (under 40x lens)

IP Result of anti-RBBP4 (IP:Catalog No:114589, 4ug; Detection:Catalog No:114589 1:1000) with HeLa cells lysate 2000ug.



Immunofluorescent analysis of HeLa cells using Catalog No:114589(RBBP4 Antibody) at dilution of 1:50 and Alexa Fluor 488-conjugated AffiniPure Goat Anti-Rabbit IgG(H+L)

