

General Information

Gene Name Synonym

FIL1 epsilon; Interleukin-1 epsilon; Interleukin-1 family member 6

Protein Construction

A DNA sequence encoding the mature form of human IL1F6 (Q9UHA7) (Met 1-Phe 158) was expressed and purified.

Organism

Human

Expression Host

E. coli

QC Testing

Purity

> 92 % as determined by SDS-PAGE

Endotoxin

Please contact us for more information.

Stability

Samples are stable for up to twelve months from date of receipt at -70°C

Predicted N terminal

Met 1

Molecular Mass

The recombinant human IL1F6 comprises 158 amino acids and has a calculated molecular mass of 17.7 kDa. It migrates as an approximately 16 kDa band in SDS-PAGE under reducing conditions.

Formulation

Lyophilized from sterile PBS, pH 7.4

1. 5 % trehalose and mannitol are added as protectants before lyophilization.

2. Please contact us for any concerns or special requirements.

Usage Guide

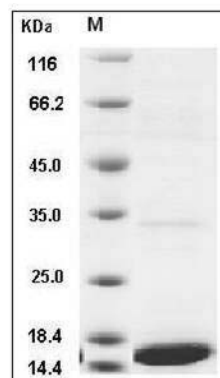
Storage

Store it under sterile conditions at -20°C to -80°C. It is recommended that the protein be aliquoted for optimal storage. Avoid repeated freeze-thaw cycles.

Reconstitution

Adding sterile water, prepare a stock solution of 0.25 mg/ml. Concentration is measured by UV-Vis.

SDS-PAGE



Human IL1F6 / IL36A Protein SDS-PAGE