

Anti-PAXBP1 antibody



Catalog Number: 142589

Product name

Anti-PAXBP1 antibody

Specificity

Human PAXBP1

Antibody description

Rabbit Polyclonal to Human PAXBP1

Preparation

Produced in rabbits immunized with a synthetic peptide corresponding to the center region of the Human PAXBP1, and purified by antigen affinity chromatography.

Formulation

0.2 µm filtered solution in PBS

Storage

This antibody can be stored at 2°C-8°C for one month without detectable loss of activity. Antibody products are stable for twelve months from date of receipt when stored at -20°C to -80°C.

Preservative-Free.

Sodium azide is recommended to avoid contamination (final concentration 0.05%-0.1%). It is toxic to cells and should be disposed of

properly. Avoid repeated freeze-thaw cycles.

Clonality

Polyclonal

Ig Type

Rabbit IgG

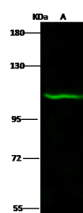
Applications

WB

Dilutions

WB: 5-20 µg/ml

Validations



Items	Lanes	A
Sample (whole cell lysate)		HeLa
Sample Volume (µg/lane)		30
Gel		7.5% SDS-PAGE reducing gel
Recommended Concentration		5-20 µg/ml
Secondary Antibody		Dylight 800 labeled Antibody to Rabbit IgG (H+L), at 1:5000 dilution.
		Developed using Odyssey imaging system.
Explanation		Predicted band size : 105 kDa Observed band size : 113 kDa

PAXBP1 Antibody, Rabbit PAb, Antigen Affinity Purified, Western blot