

Anti-14-3-3 Theta Rabbit antibody



Catalog Number: 167189

Product name

Anti-14-3-3 Theta Rabbit antibody

Specificity

Human, Mouse, Rat

Antibody description

14-3-3 Theta Rabbit polyclonal antibody

Preparation

Antigen: A synthetic peptide of human 14-3-3 Theta/Tau

Formulation

Supplied in 50nM Tris-Glycine(pH 7.4), 0.15M NaCl, 40%Glycerol, 0.01% sodium azide and 0.05% BSA.

Storage

Store at -20°C. Stable for 12 months from date of receipt.

Clonality

Polyclonal

Ig Type

Rabbit IgG

Applications

WB, ICC/IF, FC

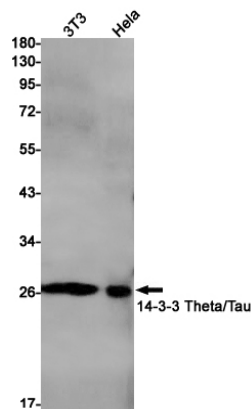
Dilutions

WB: 1/2000-1/10000

ICC/IF: 1/20

FC: 1/100-1/500

Validations



Western blot detection of 14-3-3 Theta/Tau in 3T3, HeLa cell lysates using 14-3-3 Theta/Tau Rabbit pAb(1:1000 diluted). Predicted band size: 28kDa. Observed band size: 28kDa.